

Update on Queen Mary Hospital Redevelopment, Phase 1

**Southern District Council Meeting
18 May 2017
SDC Paper No.38/2017**

Agenda

- **Report on the progress**
 - **Stage 1 – Senior Staff Quarters (SSQ) Conversion Works**
 - **Stage 2 – Preparatory Works for Construction of New Block**
 - **Internet Website & Community Newsletter for QMH Redevelopment Project**

Stage 1

Senior Staff Quarters (SSQ) Conversion Works Update

- SSQ Conversion Works
- Relocation of Departments

Senior Staff Quarters (SSQ) Conversion Works

- Progresses towards completion
- The converted SSQ was renamed as **Block T**



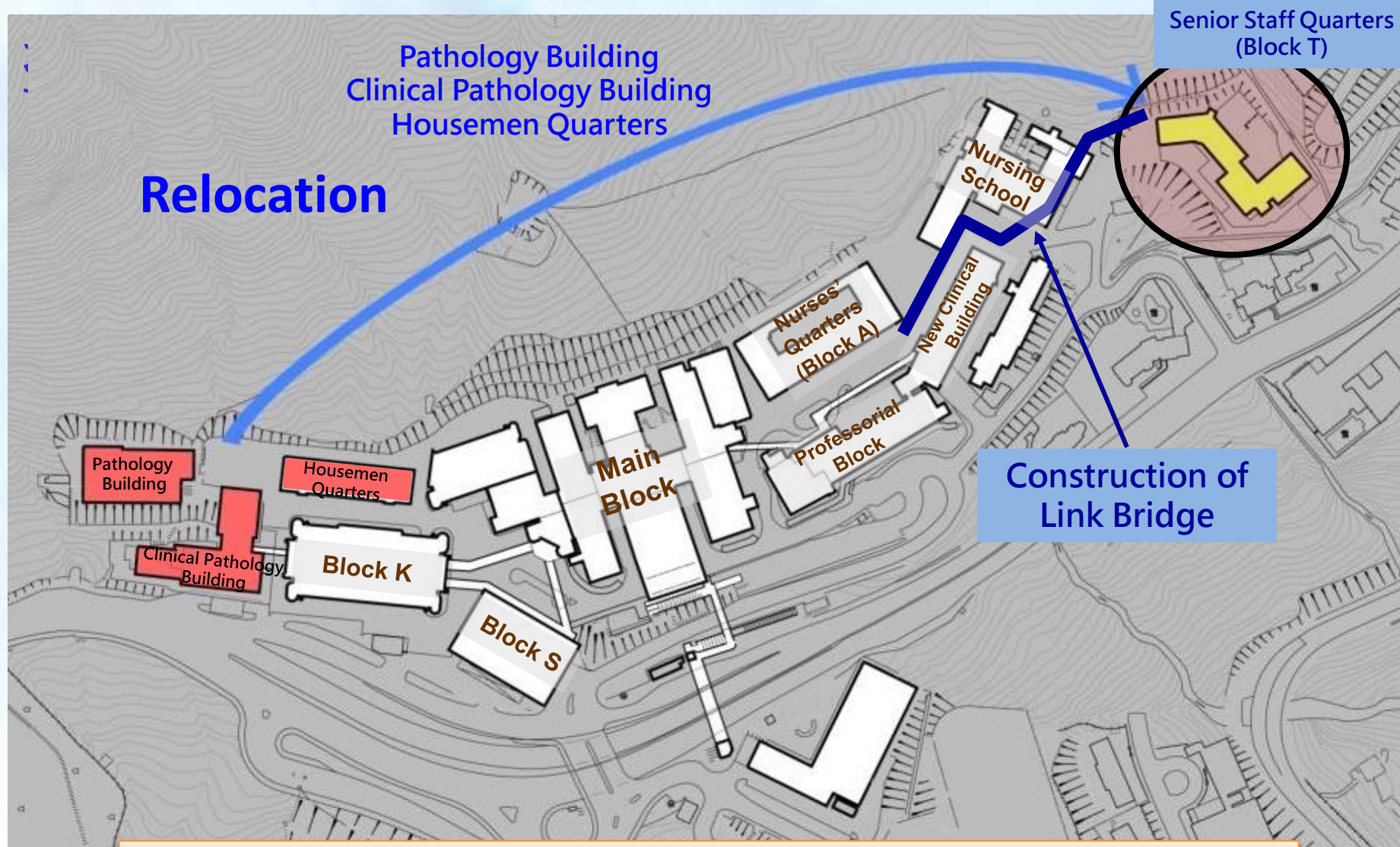
The Converted SSQ (Block T)



New Link Bridge
(Commenced Service on 8 May 2017)

Relocation of Departments

- The associated relocation works to Block T has commenced in Mar 2017 in phases



Relocation of Departments after SSQ Conversion Works for Commencement of Stage II

Stage 2

Preparatory Works for Construction of New Block Update

- Re-provision of Footpath to Kotewall Road
- Tree Preservation and Removal Proposal
- Proposed Rooftop Helipad at New Block



Re-provision of Footpath to Kotewall Road [1/3]

- The existing footpath to Kotewall Road falls within the site of QMH Redevelopment Project and therefore has to be re-provided
- The proposed new footpath falls within the existing slope improvement works site of CEDD (anticipated completion in mid-2017)
- Construction works of the footpath will commence in 2 months time after CEDD's handed back the slope to LandSD (around end of 2017)



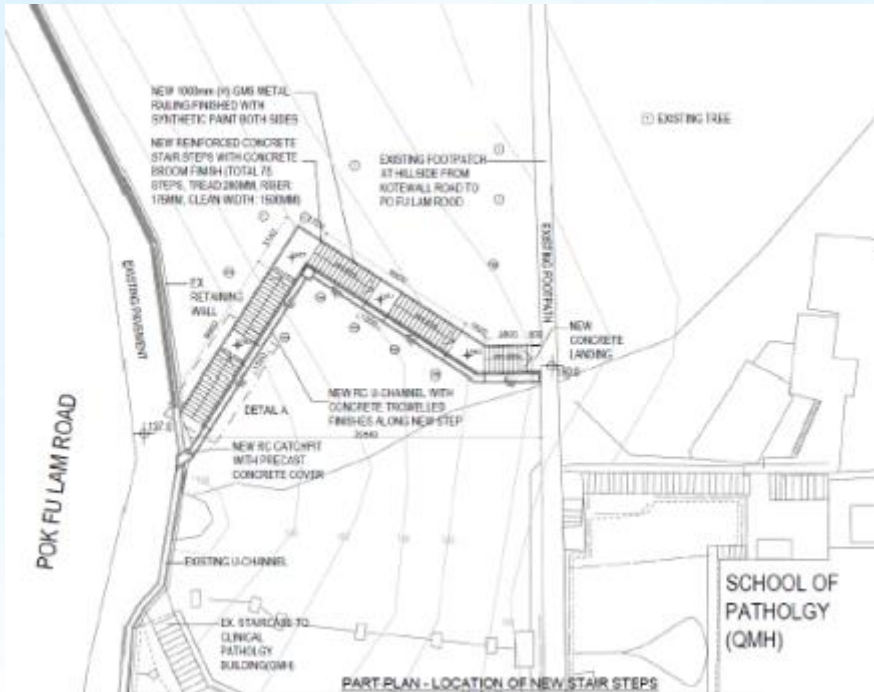
Footpath to Kotewall Road (Pokfulam Road)



- ■ ■ ■ Proposed New Footpath
- Existing Footpath
- - - Site of QMH Redevelopment Project (New Block)
- - - Existing Site Boundary of QMH (Clinical Pathology Building, Pathology Building & Housemen Quarters)

Re-provision of Footpath to Kotewall Road [2/3]

- To re-provide a new concrete stair with metal railing along the slope
- Directional sign will be provided
- Construction works period will be approx. 3 months



Proposed Layout of the New Footpath



Directional Sign (Preliminary Design)

Re-provision of Footpath to Kotewall Road [3/3]

Way Forward

- Design proposal to be agreed by relevant departments
- It is recommended that HAD will take up the maintenance of the reprovisioned footpath (excluding any slope maintenance works) according to the arrangement of District Minor Works projects

Tree Preservation and Removal Proposal [1/2]

- To make room for construction of New Block, some trees have to be felled inevitably
- Trees within the site boundary have been surveyed with 424 trees in total:
 - 352 trees will be retained
 - 68 trees will be felled
 - 4 dead trees will be removed
- Due to limited space within the site of the QMH Redevelopment Project, ArchSD had consulted more than 20 organizations but no feasible site was identified



Trees affected by the
QMH Redevelopment Project

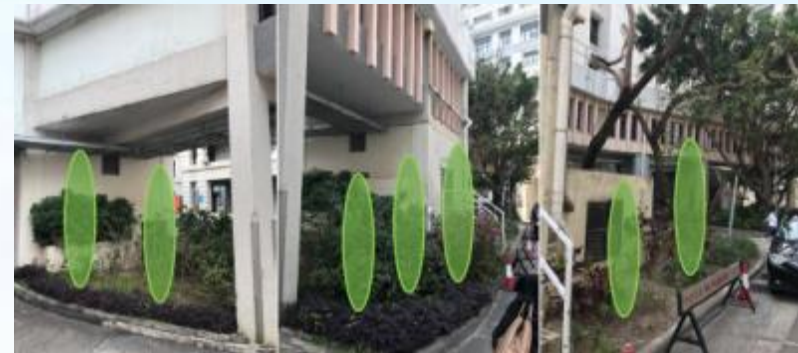
Tree Preservation and Removal Proposal [2/2]

Compensatory Planting Proposal

- ✓ Joint site visit was conducted by QMH and landscape architect of ArchSD at QMH and DKCH
- ✓ Spaces for 15 trees in total were identified for compensatory planting
- ✓ The proposal will be submitted to the Tree Preservation and Removal Proposal Assessment Panel for approval



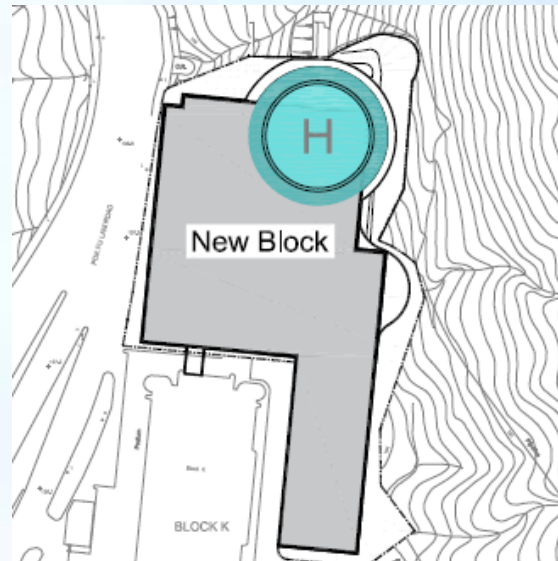
Compensatory Planting at
The Duchess of Kent Children's Hospital at Sandy Bay (8 trees)



Compensatory Planting at
Queen Mary Hospital (7 trees)

Proposed Rooftop Helipad at New Block

- Public Consultation for the Environmental Impact Assessment Report of the proposed rooftop helipad at New Block was conducted from 3 Feb 2017 to 4 Mar 2017
- Environmental Protection Department has approved the report and issued the Environmental Permit on 22 Mar 2017



Helipad Siting at the Northeast of the Rooftop of New Block (Preferred Option)



Internet Website & Community Newsletter for QMH Redevelopment Project

QMH Redevelopment Project Internet Website



- Trial run of the website demo is completed
- Expected to be launched within May 2017



Homepage of QMH Redevelopment Project Internet Website

QMH Redevelopment Project Community Newsletter



- To enhance communication with stakeholders, community partners and the public, the 1st issue of community newsletter has been launched in May 2017

瑪麗醫院重建計劃網站
QMH Redevelopment Project Website

為促進與持份者、社區伙伴及公眾的溝通，瑪麗醫院將於今年第二季內推出重建計劃的雙語互聯網站。網站設計包含重建計劃簡介、最新消息、工程進度、重要通告、出版刊物、社區聯繫活動等資訊，以及加插專題介紹和多媒體元素如相片集等。

網站根據政府資訊科技總監辦公室國際級網頁設計計劃標準編寫，方便所有人士（包括殘疾人士）使用。

To enhance communication with stakeholders, community partners and the public, QMH will launch a bilingual website for the Redevelopment Project in the second quarter of 2017. The design of the website will cover introduction of the project, the latest news and progress update, important notices, publications and publicity materials, updates on community connections activities, etc. It will also feature some interesting topics and multimedia elements such as a photo gallery.

The website is written in accordance with the judging criteria of the Web Accessibility Recognition Scheme organised by the Office of the Government Chief Information Officer (OGCIO) to ensure that the contents are accessible by the widest possible audience, including persons with disabilities.

瑪麗醫院重建計劃通訊
Queen Mary Hospital Redevelopment Project Newsletter

2017年4月 / Apr 2017

如對工程有任何查詢或意見，請聯絡：
Should you have any enquiries or comments in relation to the Redevelopment Project, please contact:

瑪麗醫院規劃及發展組
Planning & Commissioning Team, Queen Mary Hospital
電郵 Email: qmh_redevelopment@ha.org.hk
電話 Telephone: 2255 3926



瑪麗醫院重建計劃(第一期)工程
2014年開展至今，一直進度良好。籌備工作現已進入最後階段，高級職員宿舍已改建完成，新命名為T座。

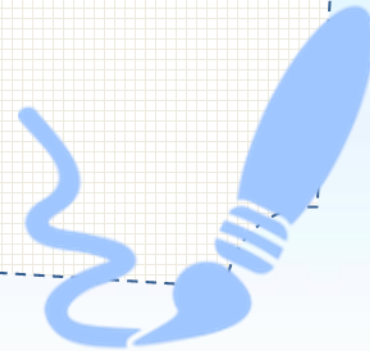
目前，臨床病理大樓、病理學樓和醫生宿舍內的服務和設施，已開始分階段遷入T座，包括臨床病理服務、相關實驗室設施和儀器、教學設施及員工住宿設施等。

We have now started to relocate the services and facilities of Clinical Pathology Building, Pathology Building and Housemen Quarters to Block T, including services of Clinical Pathology, facilities and equipment of pathology laboratories, teaching facilities and staff accommodation.

This is the debut issue of QMH Redevelopment Project Newsletter. We will communicate with you closely by providing latest information of the Redevelopment Project. We appreciate your kind support to the Project.

1st Issue of QMH Redevelopment Project Newsletter

**Your advice is
most welcome!**



Supplementary Information

Re-provision of Footpath [1/2]

Existing footpath – Site Photo

現有的行人小徑 - 照片



Supplementary Information

Re-provision of Footpath [2/2]

Re-provisioned Footpath - Site Photos

重置行人小徑 - 工程照片

Proposed New Footpath
擬建的新行人小徑

