



# Progress update on Queen Mary Hospital Redevelopment, Phase 1

Southern District Council Meeting  
14 May 2015





# Agenda

- **Report on progress update**
  - **Stage 1 – Senior Staff Quarters (SSQ) Conversion Works**
  - **Stage 2 – Preparatory Works for Construction of New Block**
  - **Internet Website for QMH Redevelopment Project**





## Progress update

### Stage 1

# Senior Staff Quarters (SSQ) Conversion Works

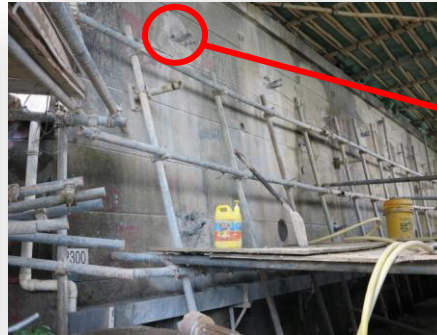


# 1. Senior Staff Quarters (SSQ) Conversion Works

- The SSQ conversion and associated works are generally on schedule.
- The Environmental Protection Department conducted a surprise site inspection on 16 April 2015. No adverse comment was received.



Overall view of SSQ



Soil nail works



Underground utility diversion works



## 2. Study on Use of Roads and Pavements

- QMH would appoint a consultant to study the pedestrian and vehicular traffic flows within and around QMH.
- Concerns from the SDC and the neighbours would be covered.
- QMH is consolidating professional advice for drafting preliminary concepts for improvements.



Review of major traffic intersections





**Progress update on**

**Stage 2**

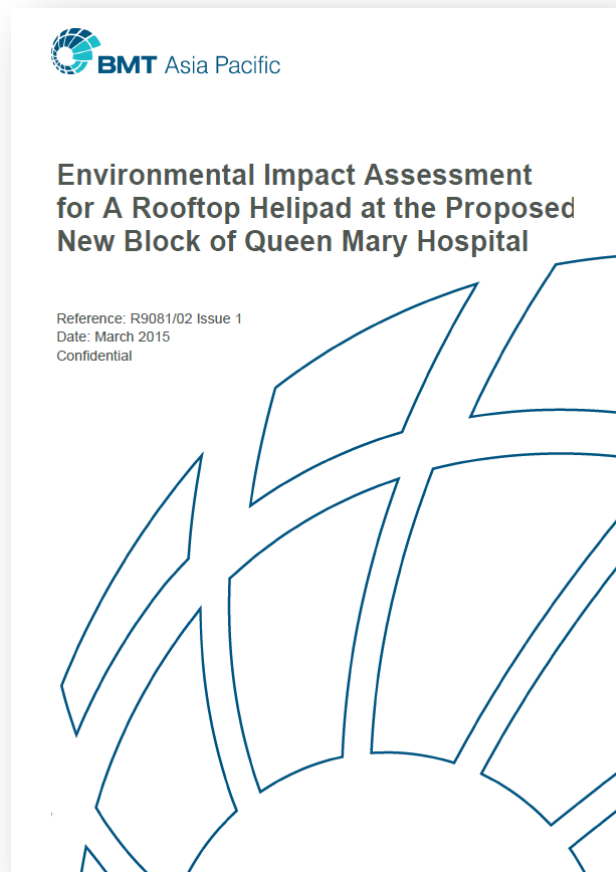
**Preparatory Works for Construction of New Block**





# 1. Proposed Rooftop Helipad

- The Environmental Protection Department (EPD) issued the Environmental Impact Assessment (EIA) Study Brief in April 2015.
- The Architectural Services Department (ArchSD) would prepare the [Environmental Impact Assessment report](#) based on the Study Brief. The EIA report is expected to be submitted to EPD by 4Q 2015.



## 2. Noise Mitigation Measure

### – Installation of Double-glazed Windows

- The installation of double-glazed windows in Blocks J and K was in progress and installation works for 13 wards have been completed.
- The scope has been extended to cover the Block K elevation facing Pokfulam Road to **further reduce the potential noise nuisance**.
- It was targeted to be completed in 1Q 2016.

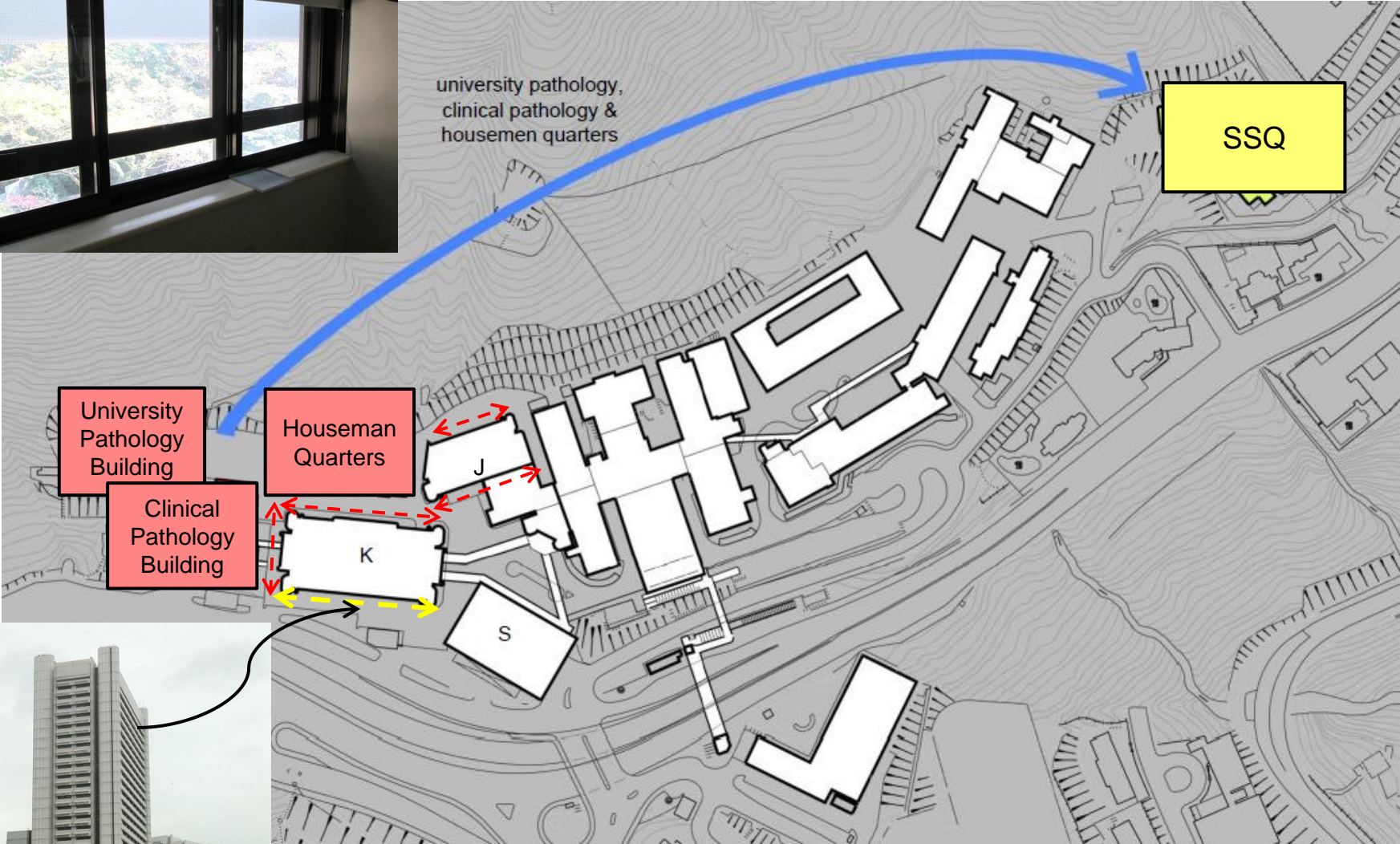
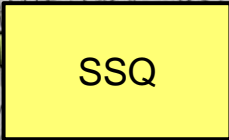




# Installation of Double-glazed Windows



university pathology,  
clinical pathology &  
housemen quarters



- ← - - - - - → Original Extent (Blocks J & K)
- ← - - - - - → Extended Section (Block K elevation facing Pokfulam Road added)



# Internet Website for QMH Redevelopment Project



# Internet Website for QMH Redevelopment Project

- An [internet website](#) would be developed to enhance two-way communication.
- Expected to be launched within 2015/16.



The image shows a draft website layout for the Queen Mary Hospital Redevelopment Project. The header features the project title, navigation menu, and language options. Below the header is a banner with four images of the hospital buildings. The main content area is divided into several sections: 'What's New' with a news item about a double-deck parking system; 'Featured Topics' with a link bridge project; 'Contact Information' with address, phone, and email details; 'Frequently Asked Questions' with a 'Hit Rate' indicator; 'Notices' with a temporary closure notice; and 'Photo Gallery'. The layout uses a clean, professional design with blue and red accents.

Queen Mary Hospital Redevelopment Project

Home | Brief Introduction | Services | Design Concept | Progress of Project | Publications | Community Connections

**What's New**  
Double-deck parking system has been launched in Queen Mary Hospital! Click for more details about our endeavour to make it more user-friendly!

**Featured Topics**  
A new link bridge will be built to connect the Senior Staff Quarters (SSQ) with the other buildings. Let's check it out!

**Contact Information**  
Address  
Room 1102, Administration Block,  
Queen Mary Hospital, 102 Pokfulam  
Road, Hong Kong  
Tel 2255 3926 Fax 2816 0782  
Email  
qmh\_redevelopment@ha.org.hk

**Frequently Asked Questions**  
Hit Rate

**Notices**  
Temporary Closure of Footpath near Pokfulam Conduit

**Photo Gallery**



Draft website layout

