



新界東醫院聯網 2017-18年度工作計劃 傳媒簡介會

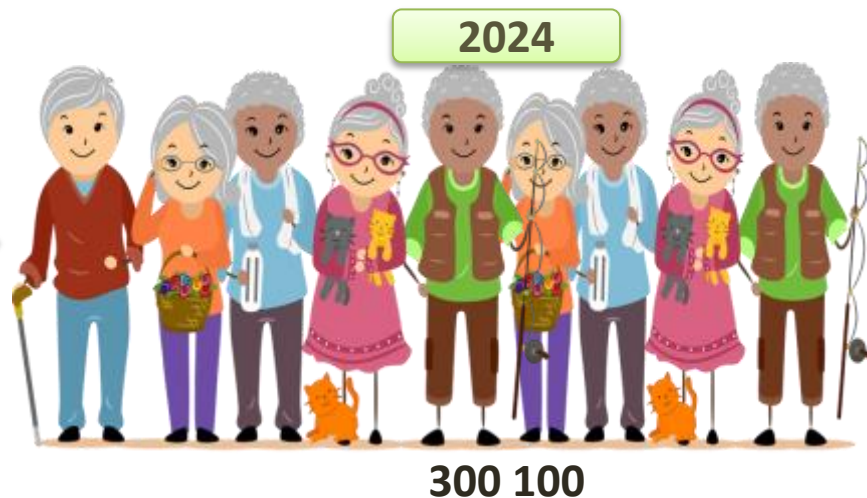
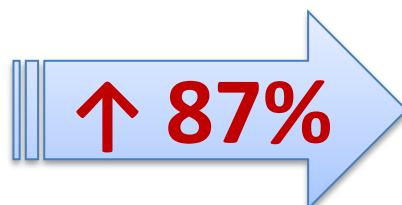
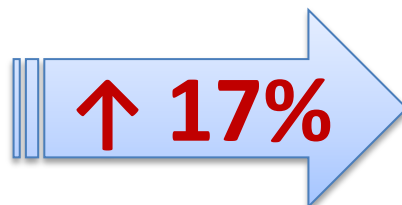
Hospital Authority New Territories East Cluster Annual Plan 2017-18 Media Briefing

2017.08.25



新界東人口老化

AGING POPULATION IN NTEC



Source: Planning Dept, HKSAR. Population figures are based on the 2011 Population Census by the Census & Stat. Dept and the latest projection by the Planning Dept



聯網面對的挑戰

CLUSTER MAJOR CHALLENGES

1. 人口老化

Aging Population

2. 不同程度的病人滯留急症室等候入院問題

Different Extent of Access Block Issues

3. 專科門診服務輪候時間較長

Long SOPD Waiting Time



STRATEGY





主要策略意向

Key Strategic Intents



1. 優化需求管理
Optimise Demand Management
2. 改善服務質素
Improve Service Quality
3. 加強員工培訓與發展
Enhance Staff Training and Development

工作計劃服務範圍 Annual Plan Service Scope



增加病床 Additional Hospital Beds	
手術室服務 Operating Theatre Services	透視鏡服務 Endoscopy Service
門診服務 Out-patient Service	內科 Medical
骨科 Orthopaedics	精神科 Psychiatry
兒科 Paediatrics	婦產科 Obstetrics & Gynaecology
腫瘤科 Oncology	眼科 Ophthalmology
專職醫療 Allied Health	社區外展服務 Community Outreach Services
影像及介入放射服務 Imaging and Interventional Radiology	病理科服務 Pathology Services
員工培訓及發展 Staff Training & Development	



因應2017/18年度工作計劃新增的人手

Additional Manpower Resulting from 2017/18 Annual Plan

醫生 Medical staff	12
護士 Nursing staff	87
專職醫療 Allied health staff	38
支援 Supporting staff	131
總數 Total	268





增加病床

Additional Hospital Beds

於威爾斯親王醫院、雅麗氏何妙齡那打素醫院及北區醫院合共增加**58張**病床





手術室服務

Operating Theatre Services

於雅麗氏何妙齡那打素醫院增設5個緊急手術室節數
Provide additional 5 emergency OT sessions in AHNH

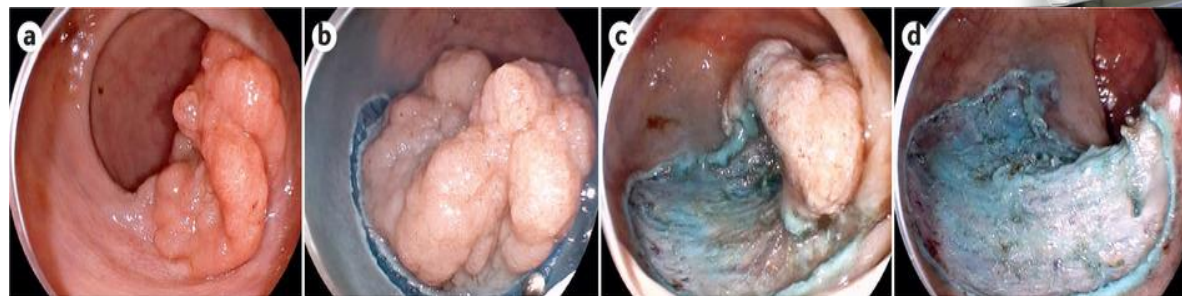




透視鏡服務

Endoscopy Service

威爾斯親王醫院增加10個透視鏡節數
Add 10 fluoroscopic sessions at PWH





門診服務

Out-patient Service

- 透過骨科與家庭醫學協作模式，提供額外 2 000 個家庭醫學專科診所服務人次，及 2 250 個專職醫療門診服務人次
A collaborative Orthopaedics & Traumatology and Family Medicine model with the targets of providing additional 2 000 Family Medicine Specialist Clinic attendances and 2 250 allied health outpatient attendances
- 增加16 500 個普通科門診診症名額
Increase of GOPC quota with the addition of 16 500 attendances
- 透過「普通科門診公私營協作計劃」為約 1 820 個病人提供服務
Cater for around 1 820 patients under the General Outpatient Clinic Public-Private Partnership





內科 Medical

- 額外為9個末期腎病患者提供醫院血液透析服務
Offer hospital haemodialysis to 9 additional patients with end-stage renal disease





骨科

Orthopaedics

- 透過骨科與老人科協作醫療模式，在雅麗氏何妙齡那打素醫院／大埔醫院為250 名年長骨科病人提供老人科支援
Provide geriatric support for 250 elderly orthopaedic patients at AHNH/TPH through an ortho-geriatric collaborative care model





精神科

Psychiatry

- 透過跨專業護理，為一般精神病患者增加600 個專科門診新症名額
Additional 600 new SOPC cases with common mental disorder will be provided with multi-disciplinary team support
- 與長者地區中心合作，為輕度至中度認知障礙症病人試行醫社協作模式
Run a pilot programme of medical-social collaborative care model for patients with mild to moderate demantia in collaboration with District Elderly Community Centres
- 為緩解大埔醫院病房過度擠迫，加設兩間刊憲病房，使病房總數增至10間，而病床數目則維持不變
Decongest the acute psychiatric wards at TPH by opening 2 more gazetted wards for a total of 10 wards to accommodate the same number of beds



兒科

Paediatrics

- 威爾斯親王醫院為初生嬰兒提供篩檢測試，
以診斷先天性代謝缺陷
Screening tests for the diagnosis of Inborn Errors of Metabolism (IEM)
will be provided for the newborns in PWH





婦產科

Obstetrics & Gynaecology

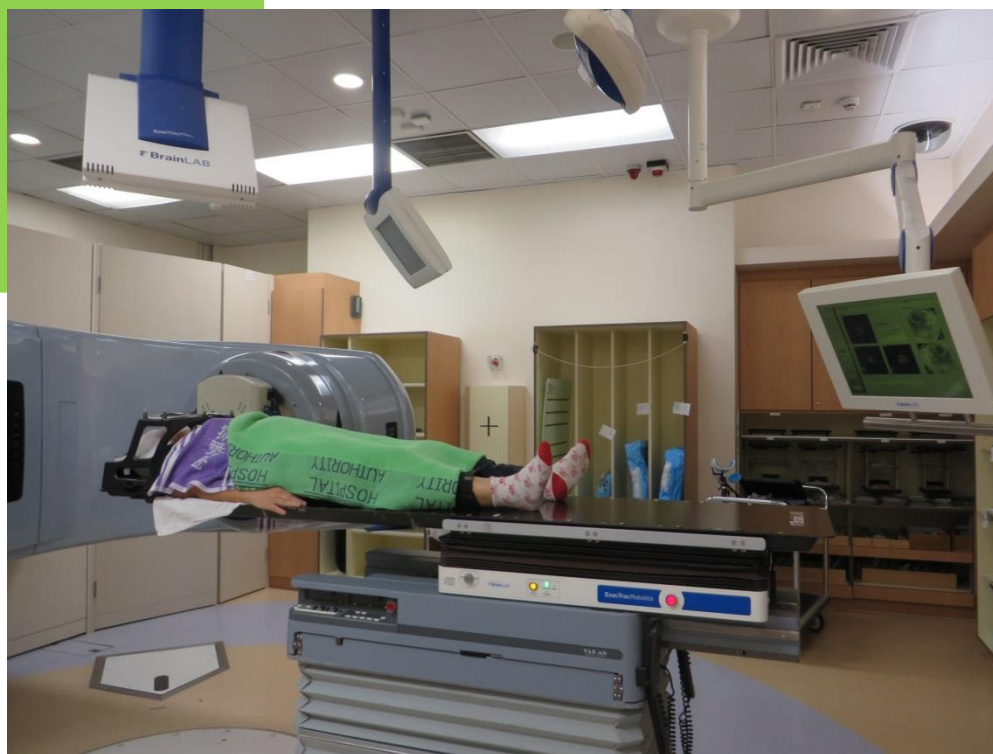
- 威爾斯親王醫院將設立不育婦科門診護士分流診所, 以舒緩日益增長的生育需求服務
A nurse infertility triage clinic will be set up at PWH to manage the increasing service demand of fertility services





腫瘤科 Oncology

- 增加1 873 個體外放射治療人次，加強癌症治療服務
Enhance cancer care by adding 1 873 external radiation therapy attendances

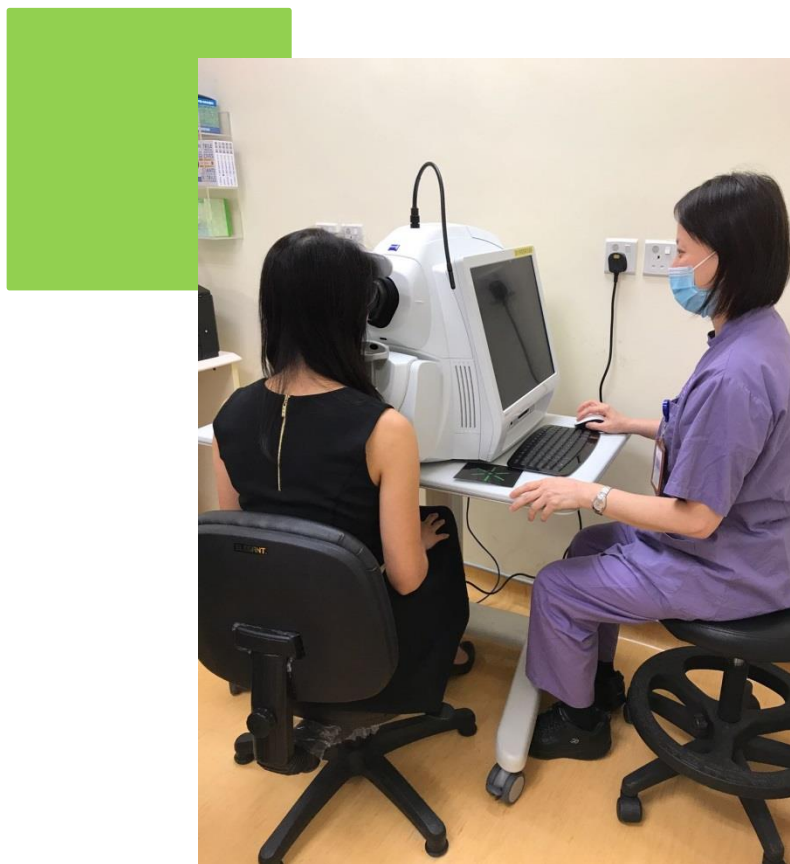




眼科

Ophthalmology

- 為青光眼病人額外提供1 650 個光學相干斷層掃描
Perform 1 650 additional Optical Coherence Tomography (OCT) scans for glaucoma patients





社區外展服務

Community Outreach Services

- 與非政府機構合作，試行醫社協作計劃，為出院的年長病人提供需要評估、出院規劃，以及出院後的康復服務

Run a pilot medical-social collaborative programme with NGOs by providing needs assessment, discharge planning and post-discharge rehabilitation service for discharged elderly patients





影像及介入放射服務

Imaging and Interventional Radiology

- 威爾斯親王醫院額外提供500 個磁力共振掃描造影服務人次
Provide additional 500 MRI attendances at PWH





病理科服務

Pathology Services

- 將增設兩台分支桿菌生長標管儀器，以提升診斷肺結核的分支桿菌測試
Install 2 additional Mycobacteria Growth Indicator Tube (MGIT) machines to enhance mycobacteria testing for the diagnosis of Tuberculosis (TB)
- 為肺癌、黑色素瘤、胃腸道基質瘤病例提供額外270 個分子檢測
Provide additional 270 molecular tests for lung cancer, melanoma and gastrointestinal stromal tumour





員工培訓及發展

Staff Training & Development



- 為實習醫生舉辦29 班必修導向課程
Organize 29 classes of mandatory orientation programme for interns
- 增聘11 名資深護師擔任兼職導師，支援為初級護士而設的啟導計劃
Recruit 11 additional Advanced Practice Nurses as part-time preceptors to support the Preceptorship Scheme for junior nurses
- 提供250 個培訓名額，讓臨床人員接受正規心肺復甦訓練，及讓保安人員接受正規急救訓練
Provide 250 training places for formal resuscitation training for clinical staff and formal first aid training for security staff
- 增聘10名註冊護士，安排在不同專科接受培訓，以應付因私營醫療機構業務發展而引致資深護士流失的問題
Recruit additional 10 Registered Nurses for training in various specialty areas, so as to prepare for anticipated wastage of experienced nurses associated with business development of the private healthcare sector



謝謝
Thank you