

診所開放時間

Clinic Opening Hours

星期一至五早上 9 時至下午 5 時
星期六、日及公眾假期休息。

黑色暴雨警告訊號、八號或以上颱風訊號懸掛期間，本診所將暫停辦公。

Monday to Friday: 9 am to 5 pm
Saturdays, Sundays and public holidays: closed

Clinic will be closed under Black Rainstorm Signal, Typhoon Signal No. 8 or above

前往診所公共交通工具

Public Transportation to the clinic

巴士 Bus

 **43M** 田灣邨↔石塘咀(循環線)
Tin Wan Estate to Shek Tong Tsui (Circular)

 **971** 石排灣邨↔海麗邨
Shek Pai Wan Estate to Hoi Lai Estate



請於域多利道西島中學站落車，然後沿大口環道斜路步行約十分鐘

Walk along Sandy Bay Road for 10 minutes after dropping off at West Island School

服務簡介

Service Introduction

麥理浩復康院賽馬會專科門診診所承蒙香港賽馬會慈善信託基金慷慨捐贈進行裝修及購置設備，是一間綜合性一站式診所。由瑪麗醫院和麥理浩復康院的跨專科醫療團隊透過協調，提供一站式包括檢查、評估及診症服務。

診所的重點設計是將分佈在醫院的多個部門集中在同一樓層，包括登記及繳費，護理、物理治療及職業治療評估，X光檢查，醫生診症，取藥和健康教育等，讓應診者毋須奔波，能夠在同一樓層應診就可以得到適當的評估及診治。

MacLehose Medical Rehabilitation Centre Jockey Club Specialist Out-patient Clinic was renovated and equipped with funds generously donated by the Hong Kong Jockey Club Charities Trust. It is a comprehensive one-stop clinic, where the multi-disciplinary team of the Queen Mary Hospital and MacLehose Medical Rehabilitation Centre work through a coordinated care approach to provide screening, assessment and consultation services to the public.

The core design of the clinic is the accommodation of different departments on the same floor. Previously, they were located separately in the hospital. These include registration and payment, nursing procedures, physiotherapy and occupational therapy, X-ray examination, doctor's consultation, pharmacy service and health education. The arrangement greatly simplifies the journey of the patients within the building, enabling them to receive appropriate assessment and treatment on the same floor in one visit.



麥理浩復康院

賽馬會專科門診診所

MacLehose Medical Rehabilitation Centre
Jockey Club Specialist Out-patient Clinic

資料概覽 General Information




地址 香港薄扶林沙灣徑7號主座2樓
2/F, Main Block, 7 Sha Wan Drive, Pokfulam, Hong Kong

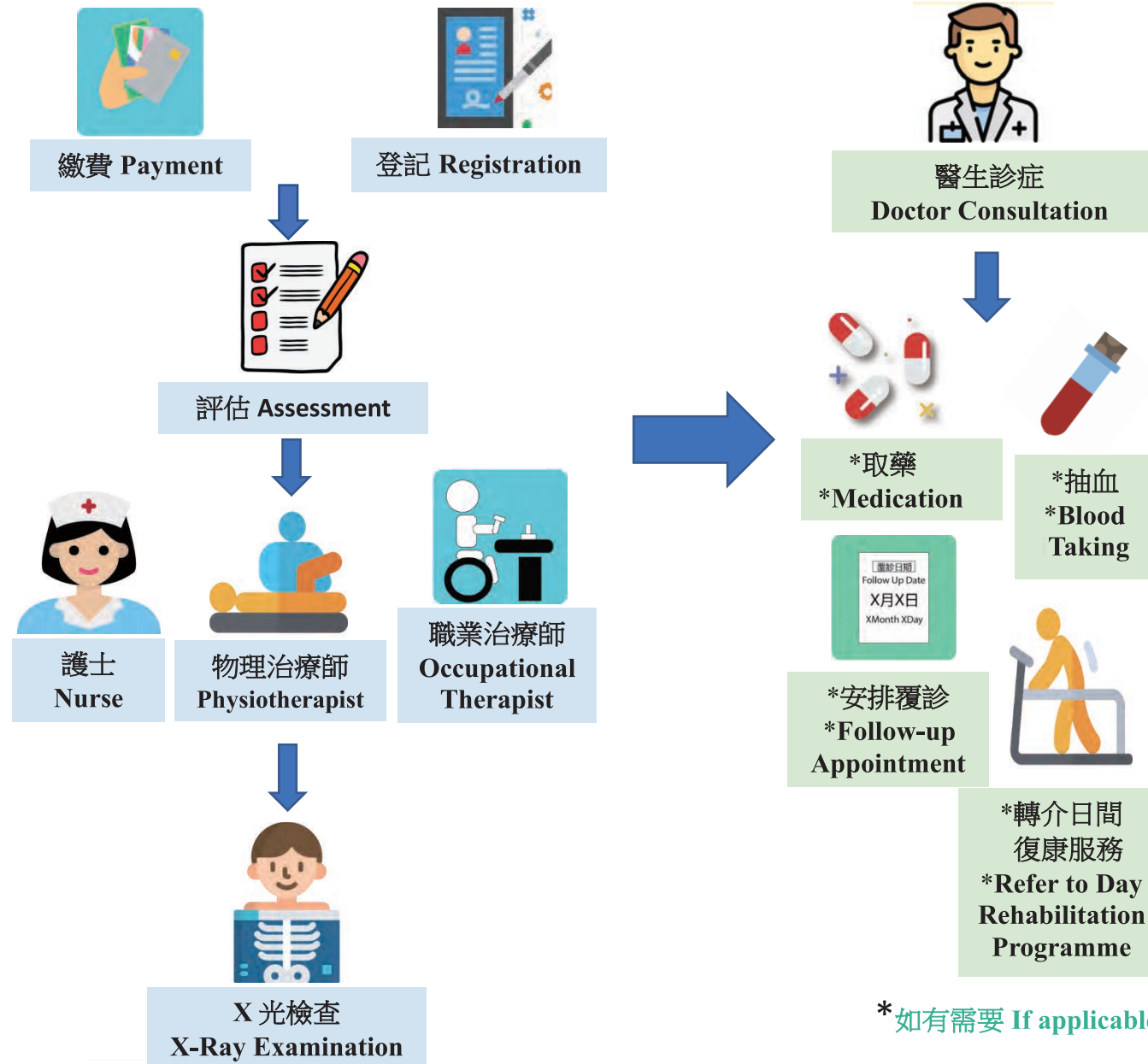
查詢 電話 Tel: 2872 8788

Enquiry 傳真 Fax: 2817 8080

電郵 Email:
mmrc_enquiry@ha.org.hk

 麥理浩復康院 MacLehose Medical Rehabilitation Centre	Pamphlet Topic & Department Code
Ownership	MacLehose Medical Rehabilitation Centre -1
Last review/revision	May/2023
Approval	HKWC Information Pamphlet Working Group
Distribution	As requested

一站式應診流程 One-Stop Patient Journey

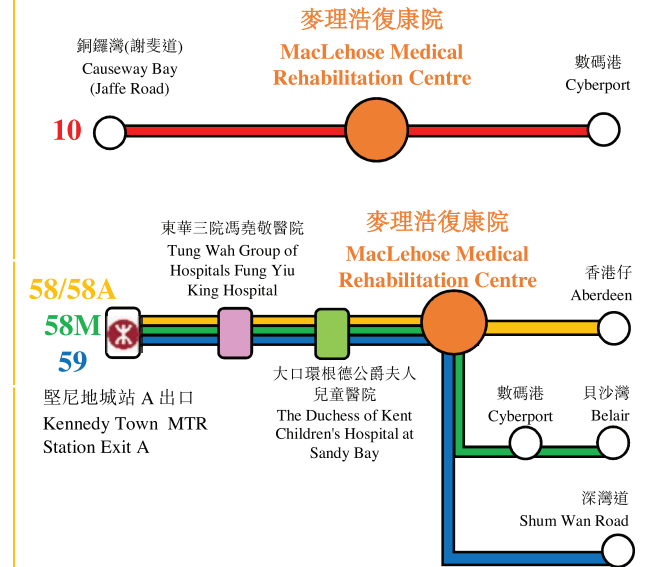


教育講座 Education Health Talk

前往診所公共交通工具

Public Transportation to the clinic

綠色專線小巴 Green Minibus



南區復康專線 Southern District Rehab Access

查詢及預約 Tel: (852) 3993 1456



Android



iOS