



瑪麗醫院

Queen Mary Hospital



乳腺管造影

Galactography

簡介

乳腺管造影是結合乳房 X 光及造影劑注入乳腺管進行的檢查，用以診斷乳頭分泌物的成因及其乳腺管的位置

檢查前準備

- 檢查當天請攜帶以往相關的病歷記錄、私家乳房 X 光照片及報告
- 如懷疑或確定懷孕，應在檢查前通知本部門職員
- 如果對碘造影劑過敏，請通知本部門職員
- 檢查前無須禁食
- 檢查當天宜穿著鬆身衣服，避免穿著連身服飾
- 切勿在乳房及腋窩部位使用止汗劑、除體臭噴劑、爽身粉或潤膚膏等用品

檢查過程

- 這是一項由放射科醫生進行的特別乳房造影程序
- 放射科醫生先將一根有鈍頭的小管放入出現分泌物的乳腺管管口中
- 再通過小管慢慢注入造影劑，以勾畫出乳腺管的位置
- 注射造影劑後，便會進行乳房 X 光檢查以確定乳腺管的內部情況
- 如有乳頭內陷，檢查有機會不成功

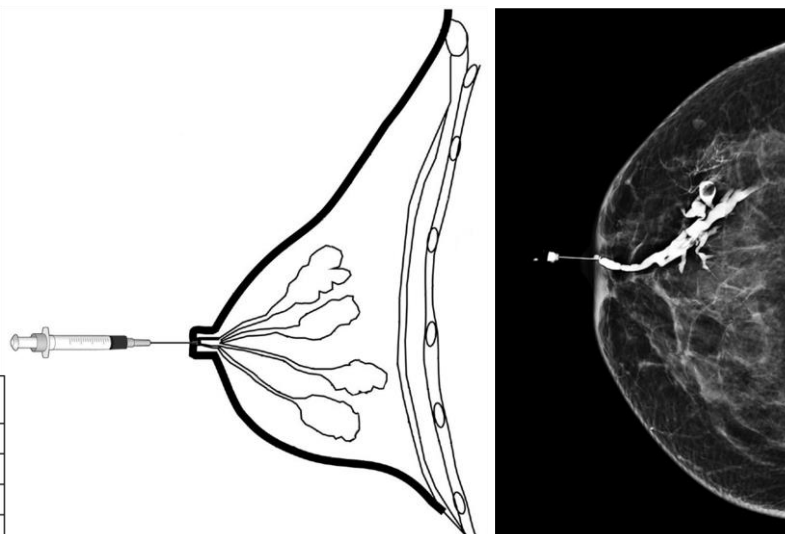
檢查的特定風險及可能發生的併發症


- 病人如有乳腺炎或感染，不宜進行此項檢查
- 不常見的併發症包括造影劑外滲、乳腺炎或感染
- 乳頭輕微出血
- 罕見的併發症包括對造影劑出現過敏反應、休克或血管迷走神經性昏厥

檢查後須知

- 檢查完成後乳頭會有少量溢液屬於正常現象，這是由於所使用的造影劑引致
- 檢查後可如常進食
- 如有任何疑問，請於辦公時間致電瑪麗醫院放射科乳房造影部

2255 5500 / 2255 4839



 瑪麗醫院 Queen Mary Hospital	Pamphlet Topic & Department Code
Ownership	QMH/Department of Radiology - 18
Last review/revision	July/2024
Approval	HKWC Information Pamphlet Working Group
Distribution	As requested



瑪麗醫院

Queen Mary Hospital



乳腺管造影

Galactography

Introduction

Galactography is a procedure that uses mammography and injection of contrast medium to outline the milk ducts of the breast. It is aimed to identify the cause of nipple discharge and locate the lesion

Preparation before the Procedure

- Please bring private mammograms and reports performed in other imaging units, if any
- Please inform our staff before the examination if you are or may be pregnant
- Please inform our staff if you have allergy to iodinated contrast medium
- Normal diet as usual
- Wear loose clothing and avoid jumpsuit on the day of the examination
- Do not apply antiperspirant, deodorant, talcum powder or lotion to the breast and axillary region

Procedure

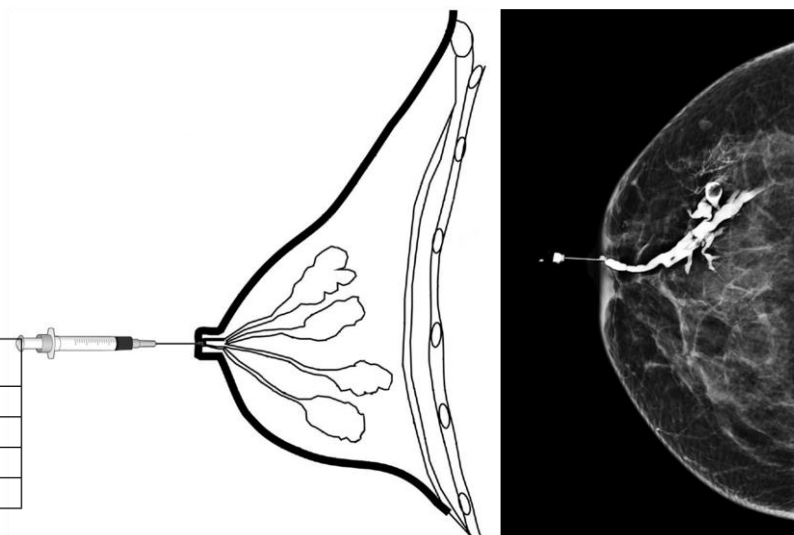
- This is a special type of mammogram performed by the Radiologist
- The Radiologist slowly inserts a small blunt-tipped cannula into the discharging duct orifice
- Contrast material will be injected slowly through the cannula to outline the breast duct
- After contrast medium injection, mammogram will be performed to produce pictures of the milk ducts
- For women with inverted nipple, the examination may not be successful

Possible Risks or Complications

- This examination is contraindicated in patients with mastitis or infection
- Uncommon complications include contrast extravasation, mastitis or infection
- Minor bleeding at nipple which is usually self-limiting
- Rare complications include contrast reaction, shock or vasovagal reaction

Aftercare

- It is normal to have some nipple discharge after the procedure which is caused by the contrast medium used
- Resume normal diet after the procedure
- If you have any query, please contact Breast Imaging Unit, Department of Radiology, Queen Mary Hospital at 2255 5500 / 2255 4839 during office hours



瑪麗醫院 Queen Mary Hospital	Pamphlet Topic & Department Code
Ownership	QMH/Department of Radiology - 18
Last review/revision	July/2024
Approval	HKWC Information Pamphlet Working Group
Distribution	As requested