

HA Convention 2018

Multi-center Clinical Audit on Occupational Therapy Work Rehabilitation Services for Out Patients

Patrick So T.W.

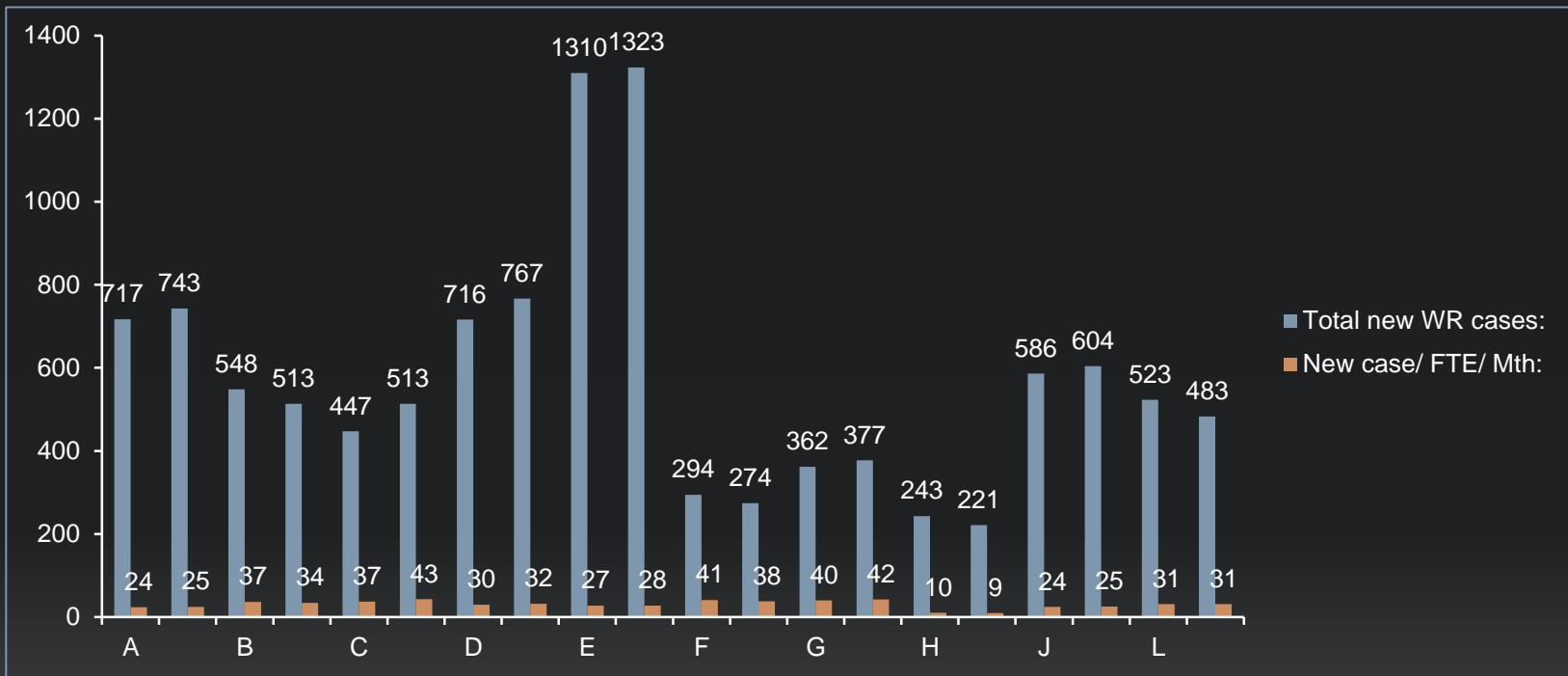
Occupational Therapy Department

North Lantau Hospital

Introduction:

- **Objective:**
 - To assure the standards of service provision among Designated OT Work Rehabilitation Centers (DWRC) in each cluster
- Audit team:
 - Representatives from DWRC who had over 10 years' experience in providing work rehabilitation services
- Sampling for document audit:
 - Randomized case number of all patients DC in the period 2014-16
 - Then drawing of 5 patient files from every DWRC in each year
- Peer review:
 - Interview of therapists & inspection of environment for provision of work rehabilitation services (usually is a part of OT out patient sector)

New Cases attended OT Work Rehabilitation Services per Year

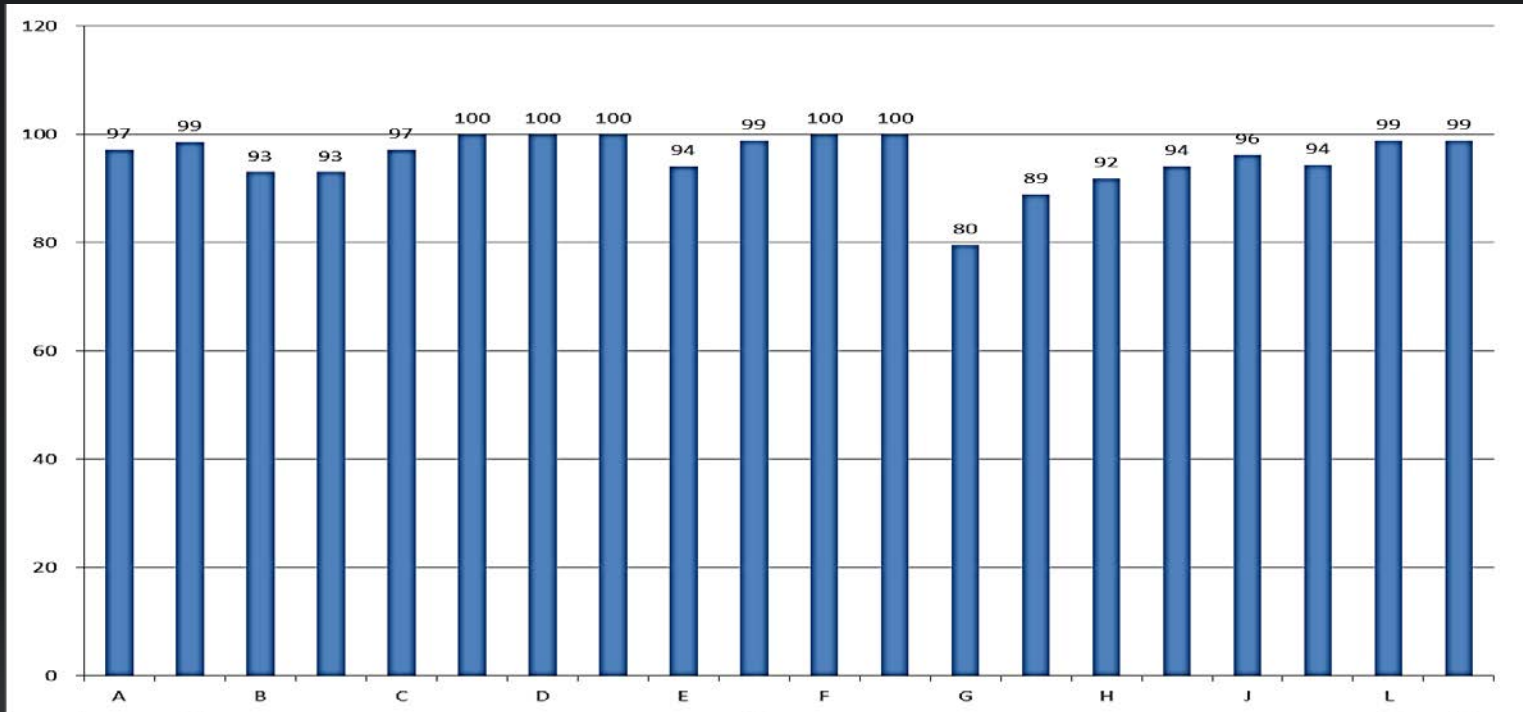


Average total no. of New WR cases per Designated Work Rehabilitation Center (DWRC):
 2010-11 (361, per DWRC)

2014-15 (575, per DWRC)

2015-16 (582, per DWRC) +61% Vs 2010-11

Audit Score (Compliance to OTCOC Clinical Guideline)



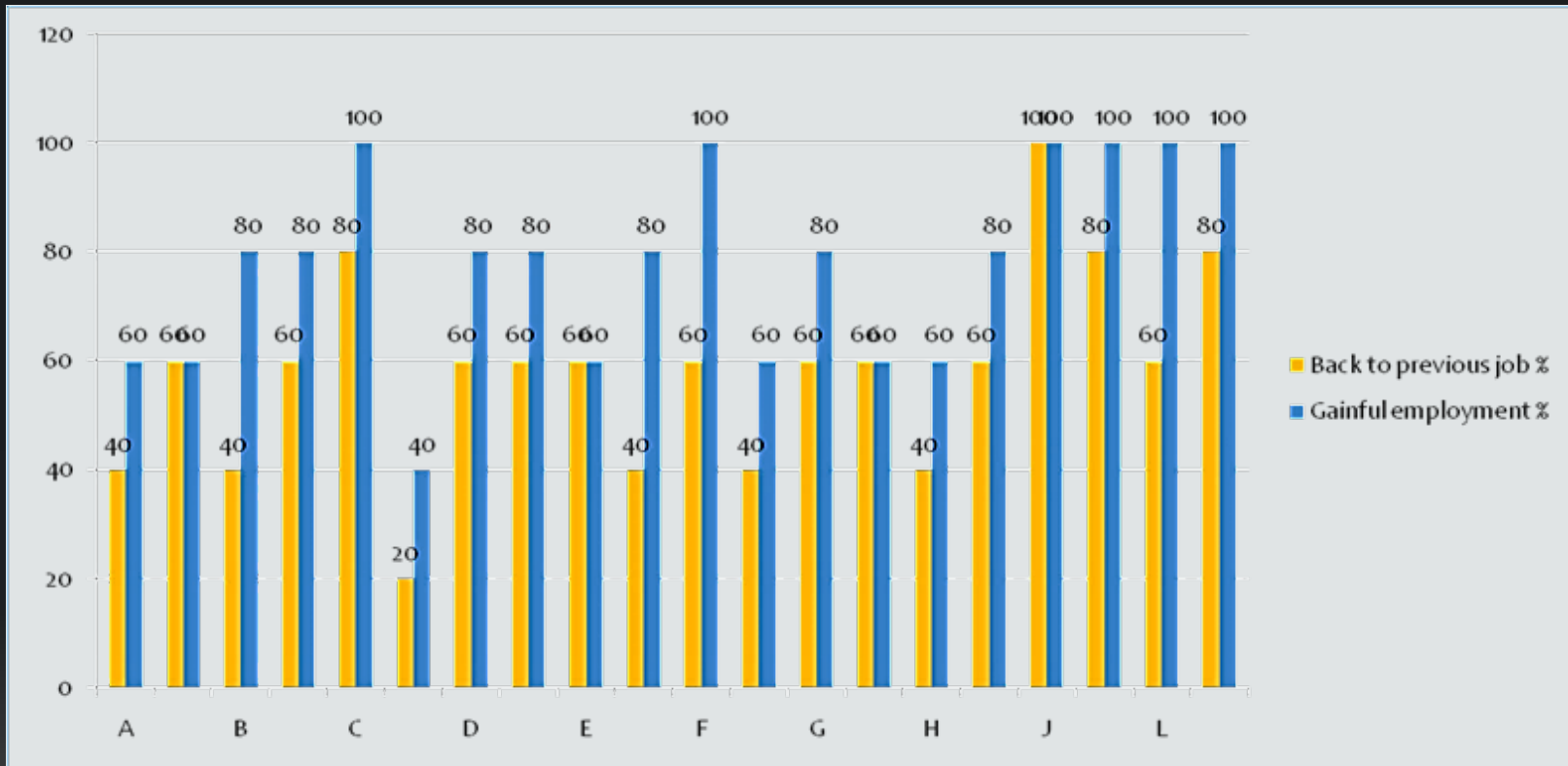
Average Total Audit Score (10 DWRC):
2010-11 (89 %)

2014-15 (95 %)

2015-16 (97 %)

***Full compliance** in the following parameters: Program entry risk stratification prior to intervention; Observe “Biomechanical, physiological & psychophysical termination criteria” throughout intervention; Familiar with the operation of essential instrument/equipment; Documentation of assessment results, treatment plan and outcome measures with the use of Clinical Management System; Maintain calibration & schedule checking of essential instrument/equipment.*

Rate of Return-To-Work



Average RTW % (10 Designated OT Work Rehabilitation Centers):
2014-15 & 2015-16 (Gainful Employment = 74% - 82%, within which 56% - 60% resume to Previous Job)

Conclusion:

- The markedly ***growth of service demands*** (+61 % new referrals in 5 years) & the ***increasing diversities of interfacing with clinical specialties*** (e.g. Family Medicine, Rehab Day Hospital, etc.) leading to the need to ...
 - Enhance existing Model of Care ... incorporate standardized Work Rehabilitation Intake Interview in the **triage of newly referred patients for intervention strategies** (e.g. work hardening Vs psychosocial intervention Vs resettlement) in related to RTW barriers as identified
 - Explore the benefits of **other evidence proved strategies** like Return-To-Work (RTW) coordination & workplace intervention for more accurate prescription of modified duties (job accommodation), psychosocial modalities for enhancement of coping in workplace ...
 - Develop **service model(s) for specific client groups** (e.g. CVA, Ca survivor, commercial drivers with chronic illnesses ...)