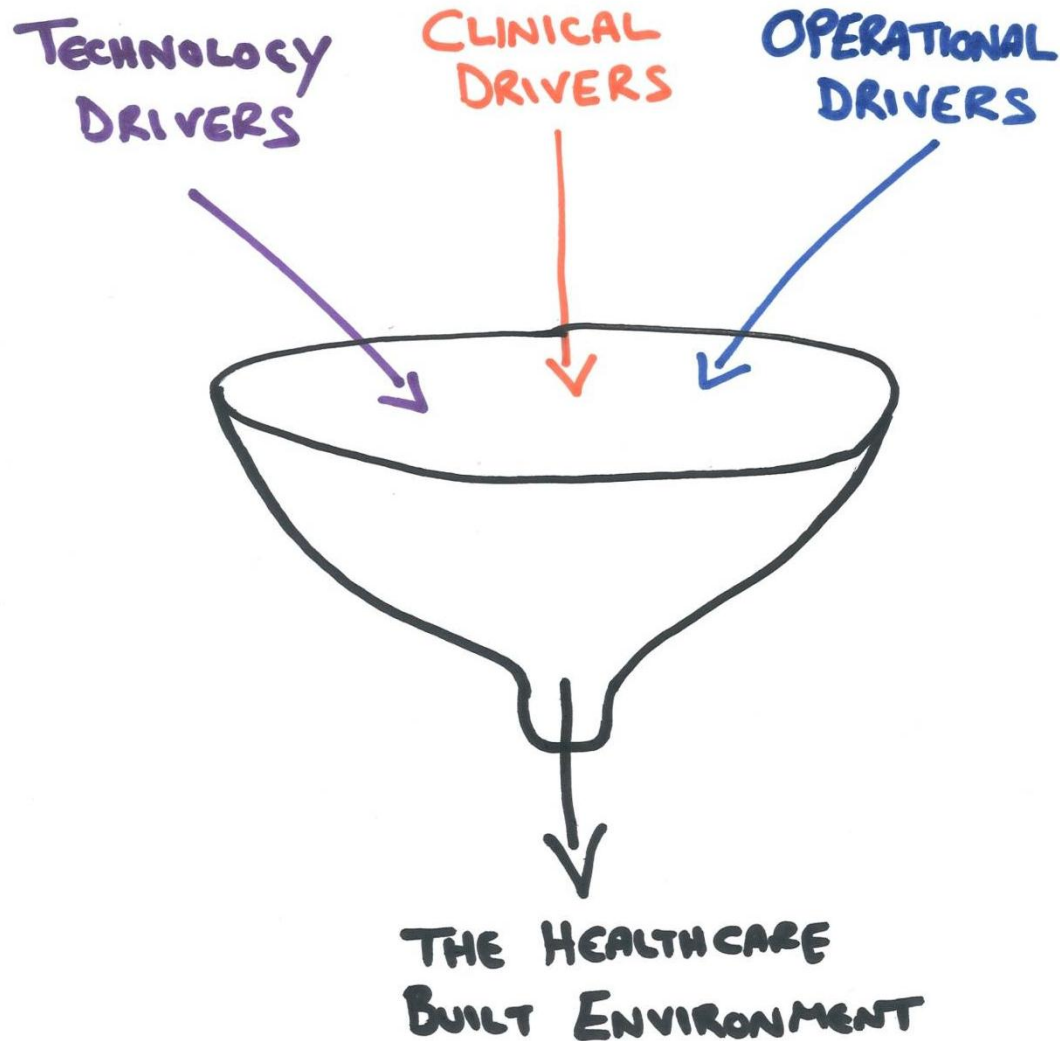


Can We Create Healthcare Environments that remain responsive and relevant throughout their building lifecycle?

Speaker : Danny Gibson MSc FIHEEM
MJ Medical Ltd

The Challenge



The Challenge

OPERATIONAL
DRIVERS



National Strategic Direction
Cost Control
Efficiency
Patient Safety / Risk Management
Quality of Care / Patient Centred Care
Competition
Staff Retention
Re-use of Existing Estate

CLINICAL
DRIVERS



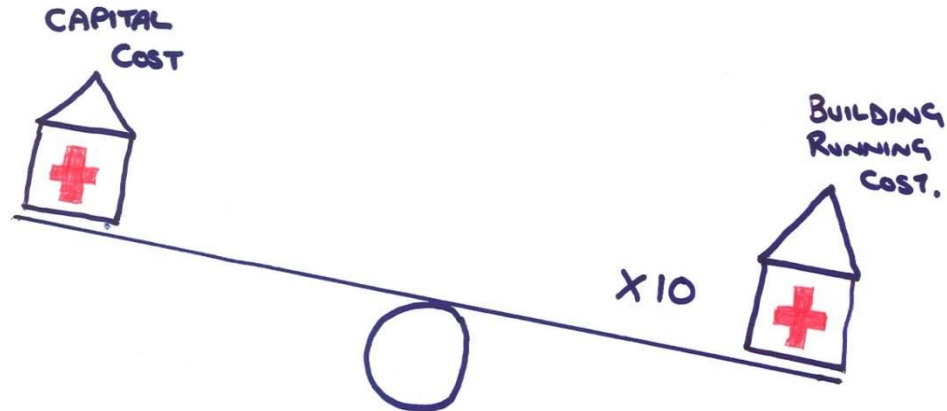
Models of Care
Care Pathways
Different Environments
Aging Population
Changing Demands
Clinical advancements

TECHNOLOGY
DRIVERS

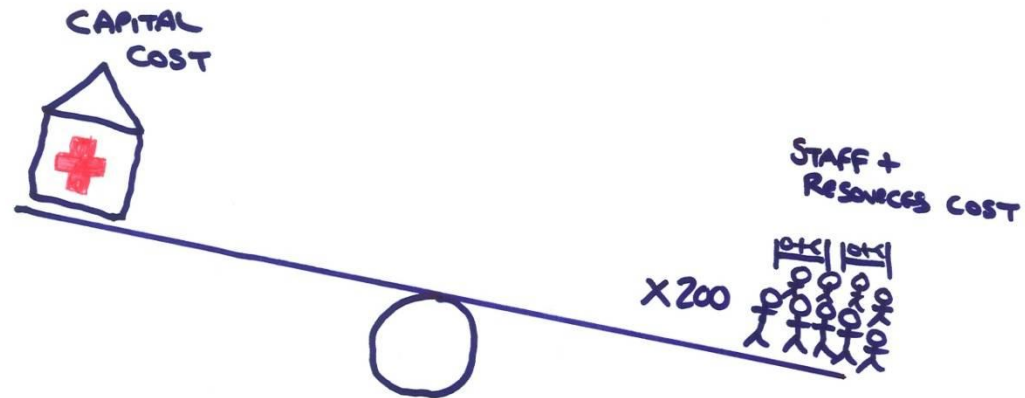


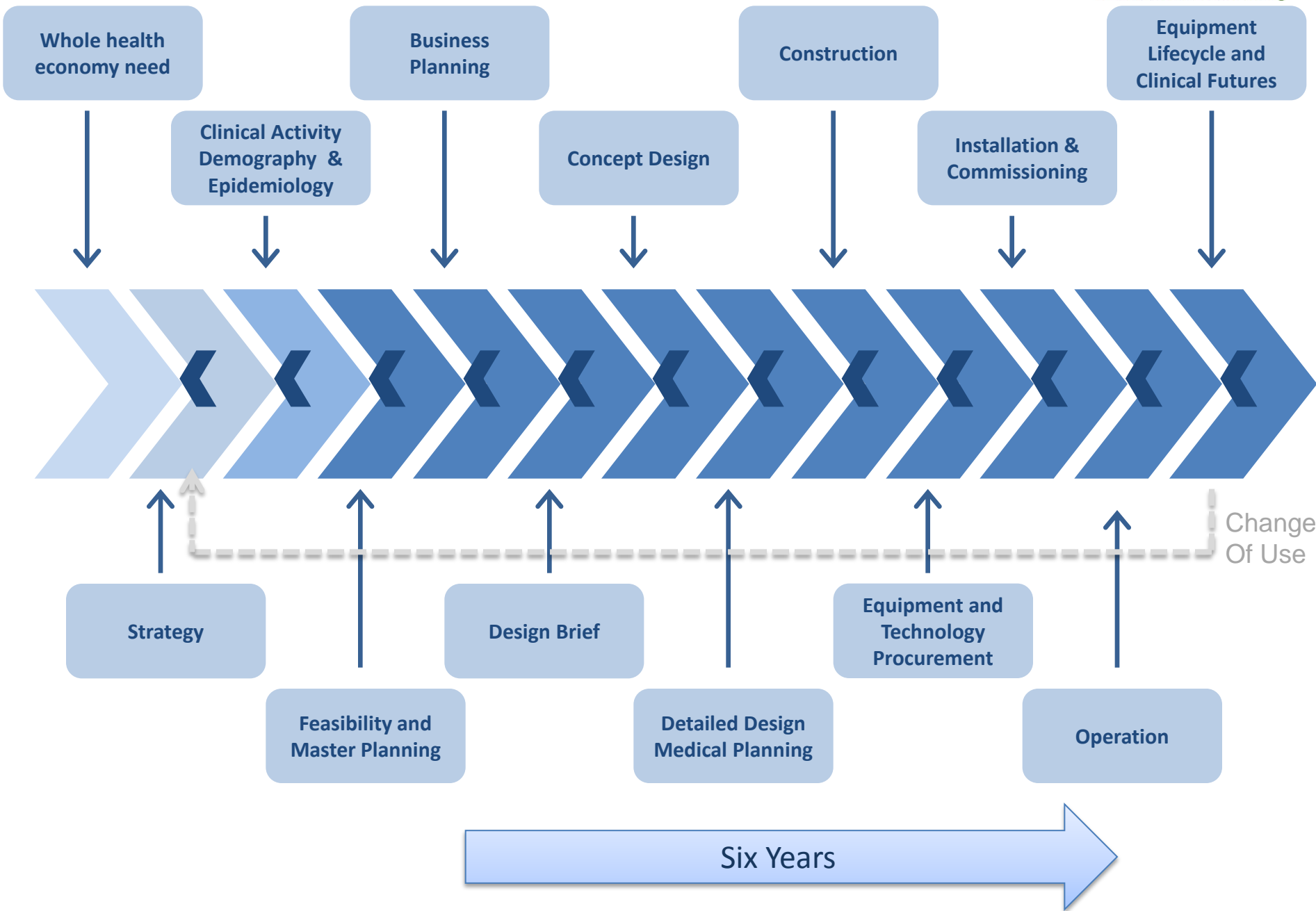
Diagnostics
Mobility and Miniaturisation
Minimal Intervention

The Challenge



The Challenge

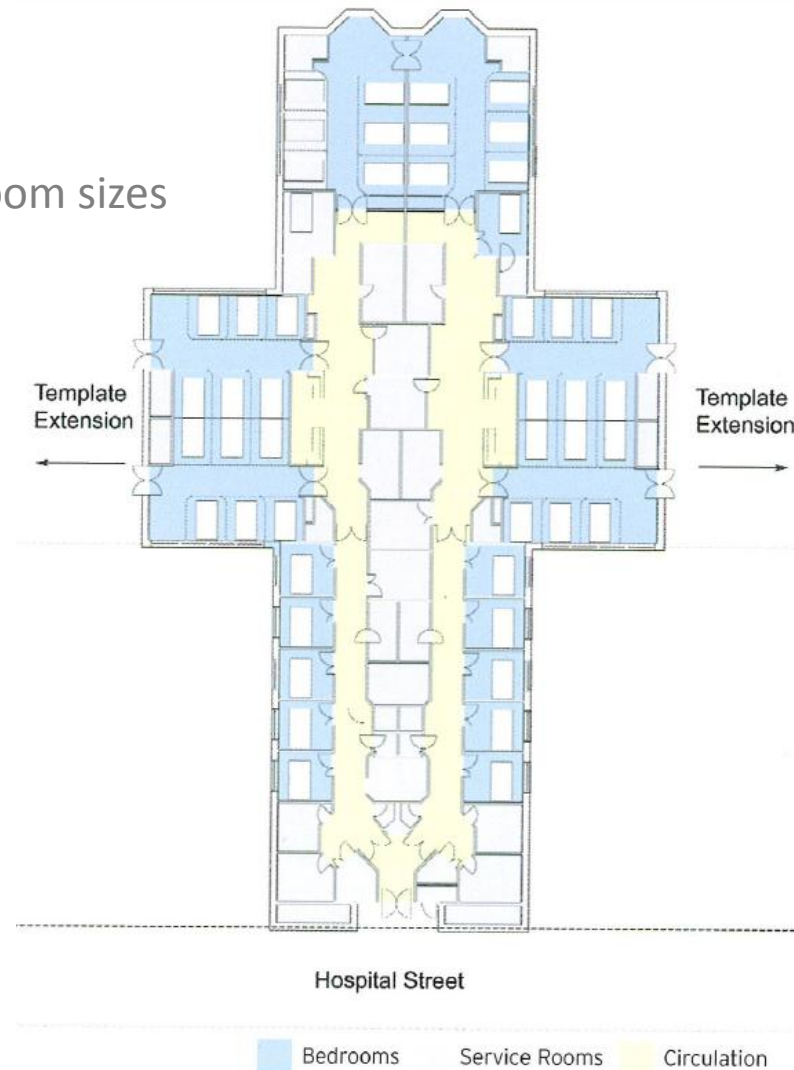




Solutions

SPACE

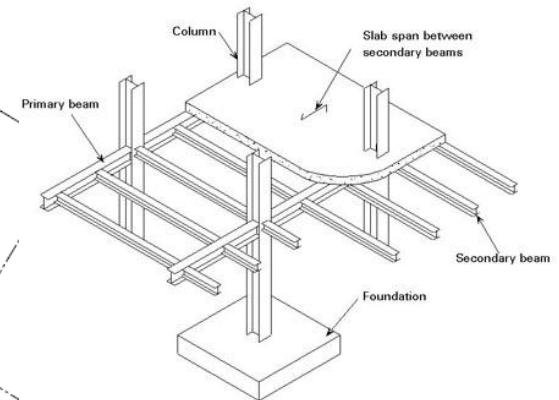
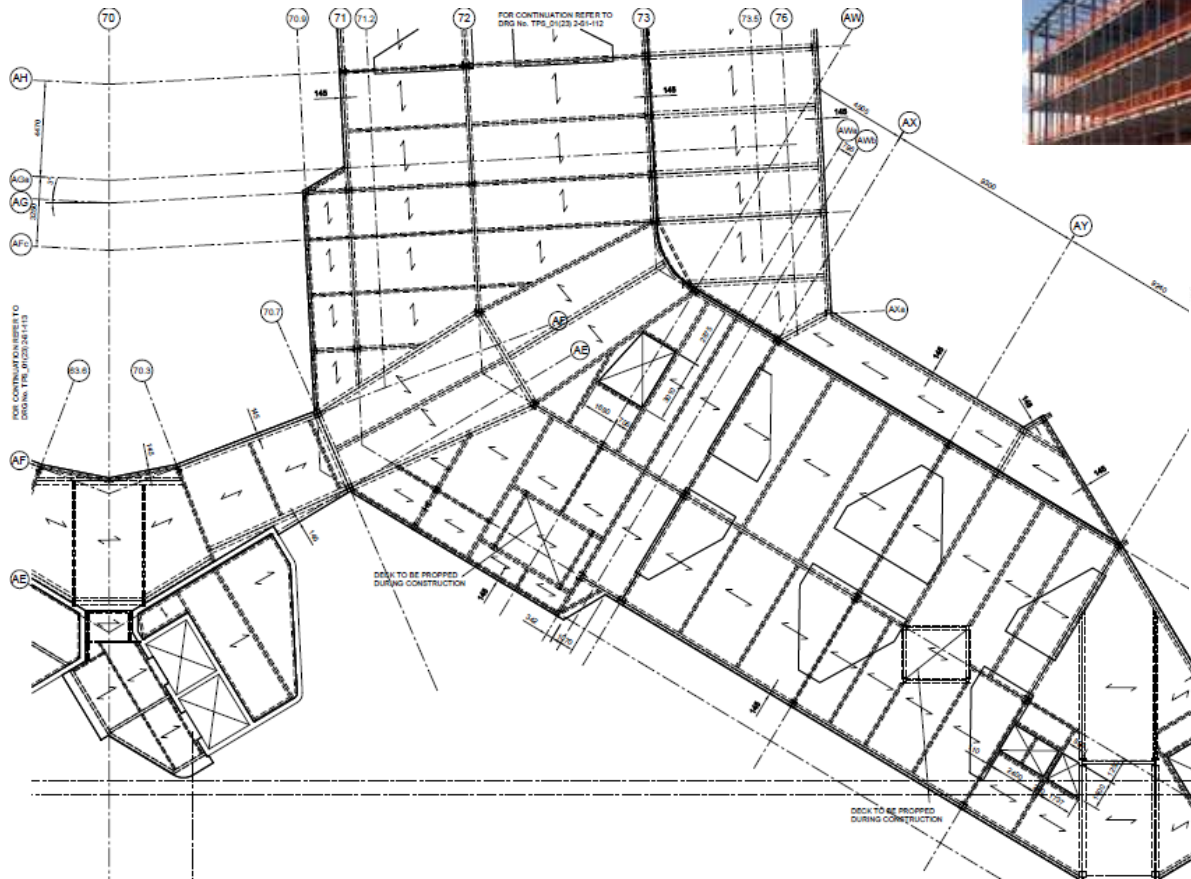
- _ Long Life, Loose fit
- _ Optimising a suite of standardised room sizes
- _ Inclusion Soft space



Solutions

STRUCTURE

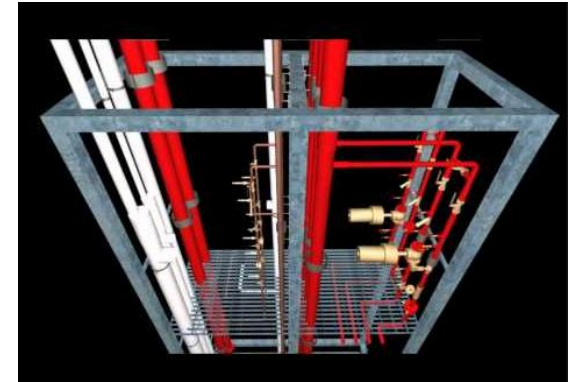
Optimisation of structural form / span



Solutions

INFRASTRUCTURE

- _ Increasing the capacity and intelligent design of building services
- _ Maximising ICT



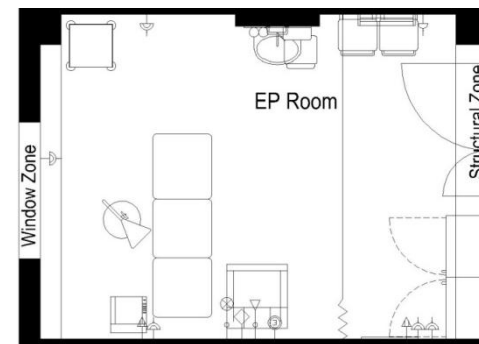
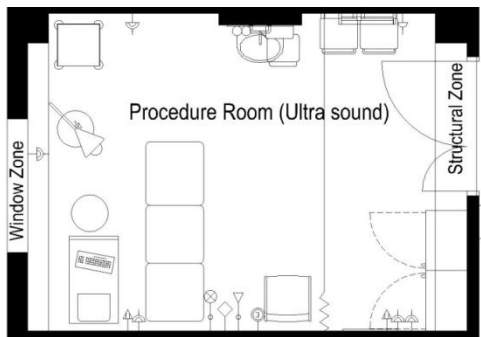
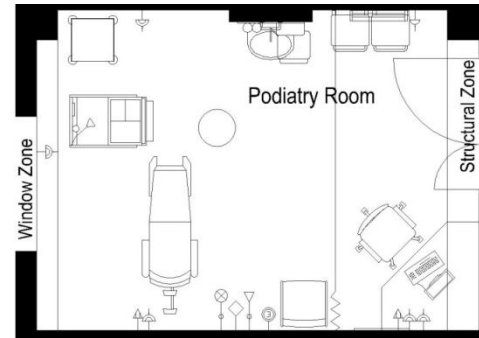
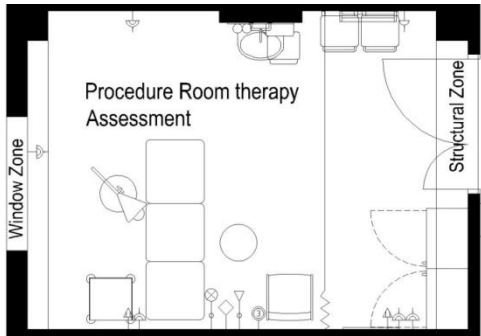
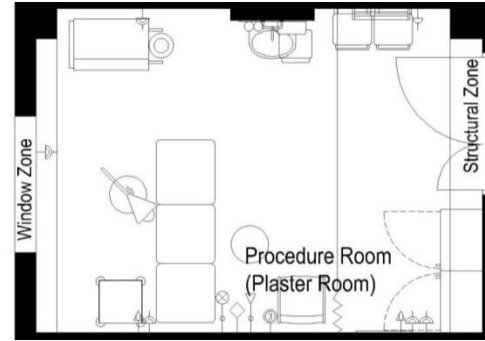
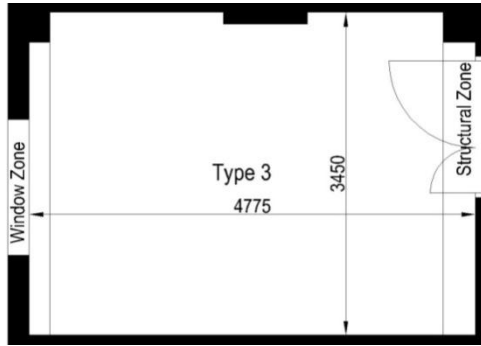
North Bristol NHS Southmead Hospital, UK

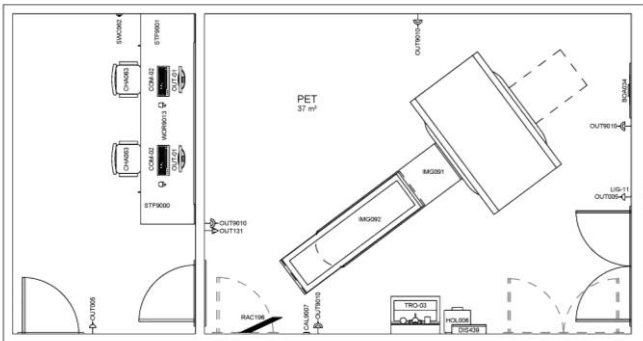
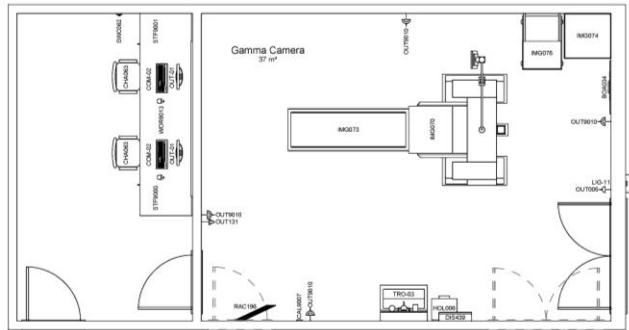
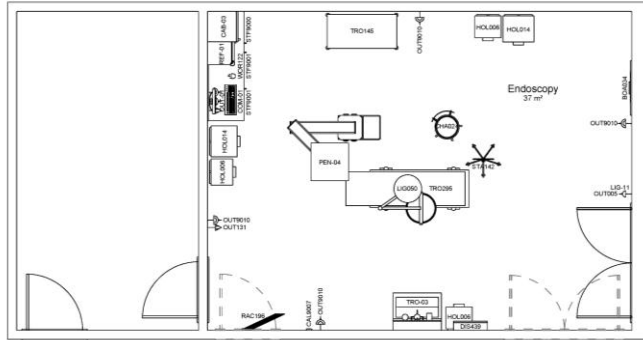
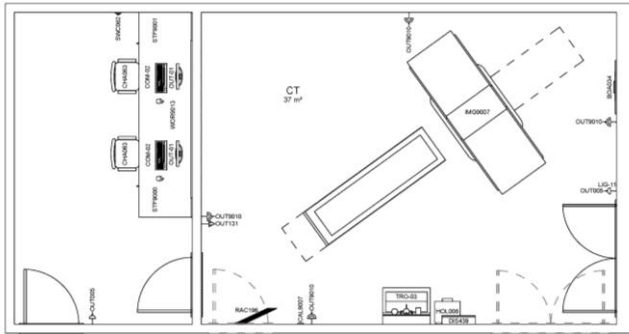
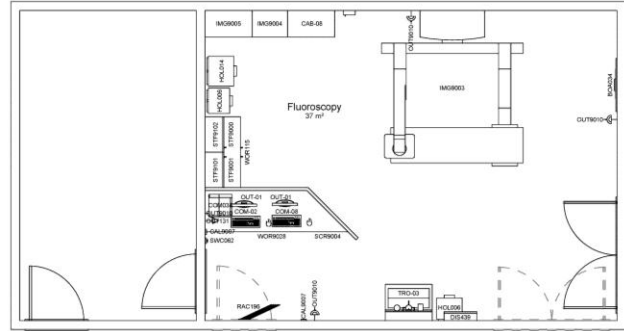
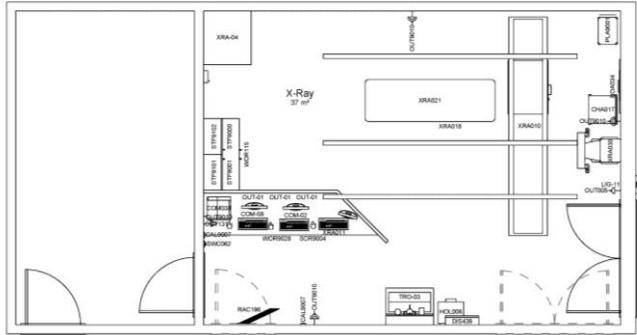
US\$ 688 Million



Working in Partnership with







Working in Partnership with

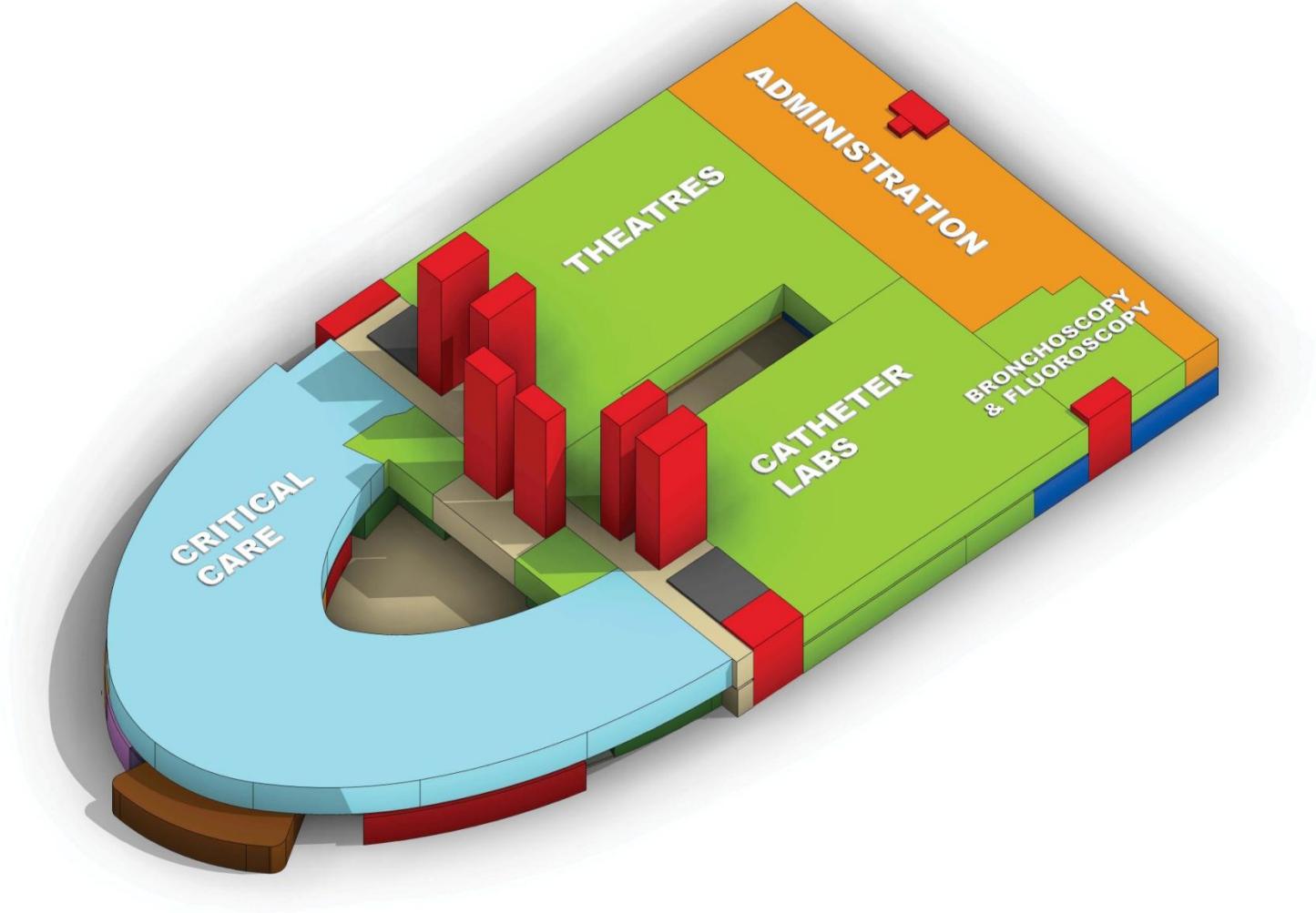
SKANSKA



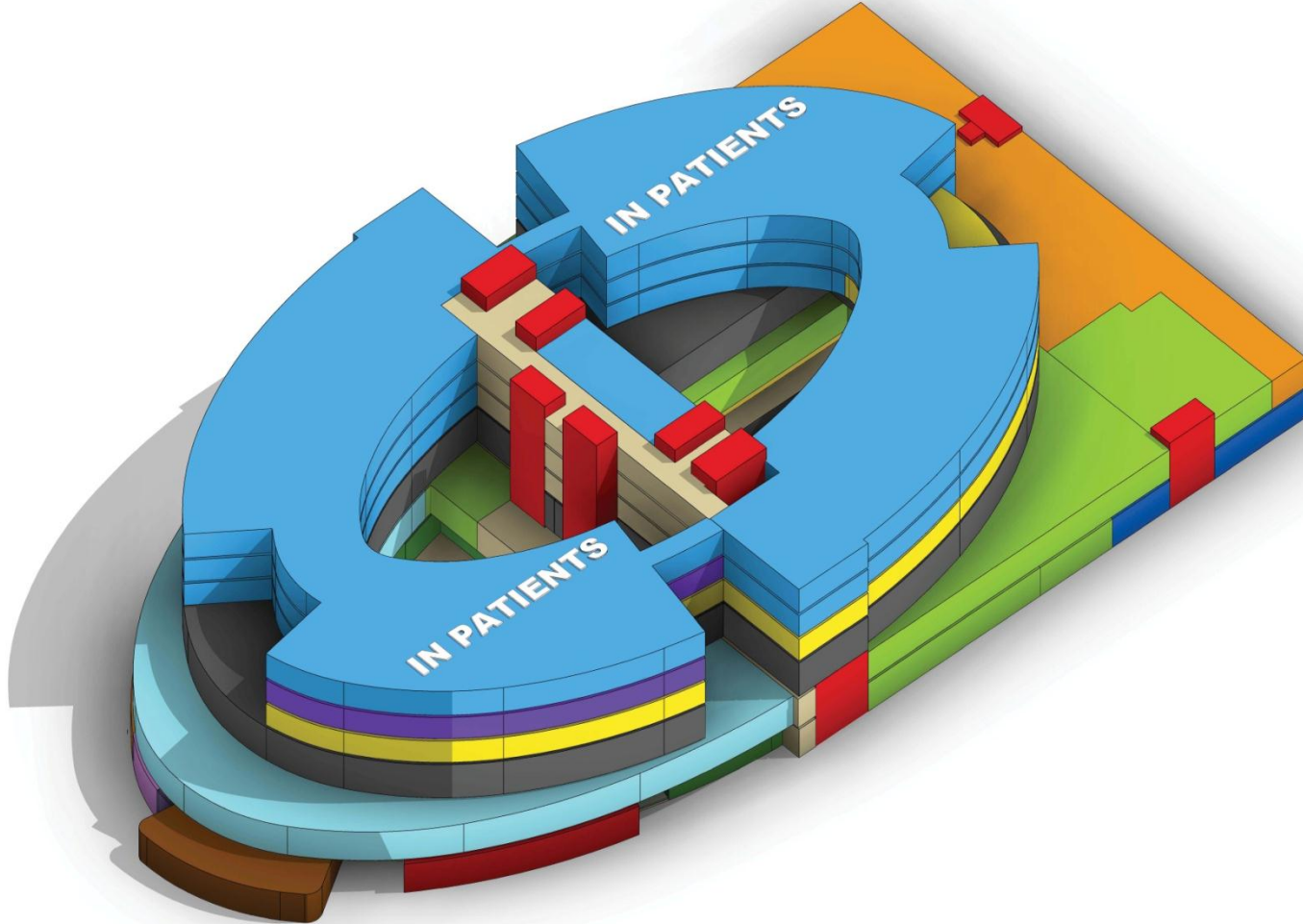
mjmedical
cohesive clinical thinking



Papworth Specialist Cardiothoracic Hospital, UK
US\$ 264 Million







Royal Hospital for Sick Children, Edinburgh, UK US\$ 400 Million

mjmedical
cohesive clinical thinking

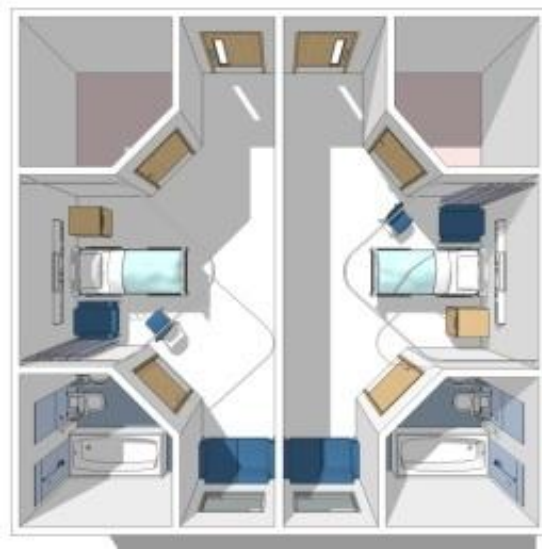
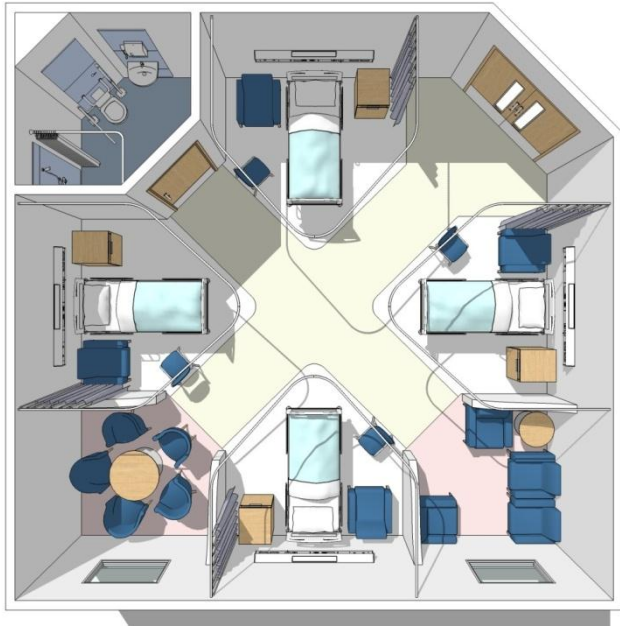


Working in Partnership with

LAING O'ROURKE

keppie

HASSELL



What stops it working?

The quality of **project briefing** can restrict flexibility

Project economics

Value engineering

Delayed adoption of smart design tools (**BIM**)

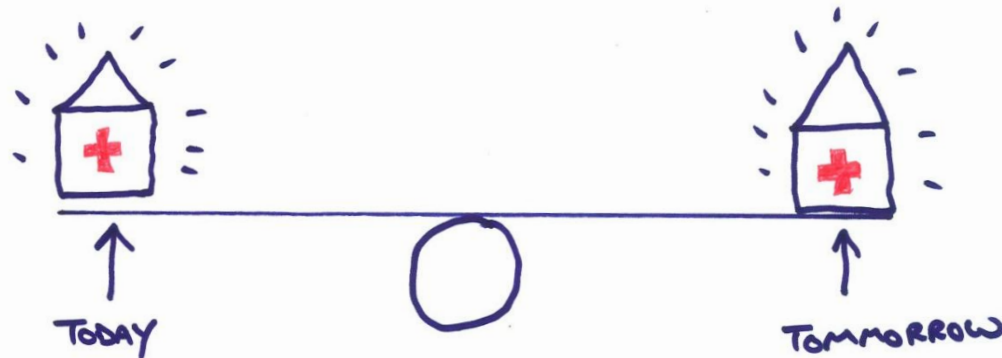
Is there an optimum solution?

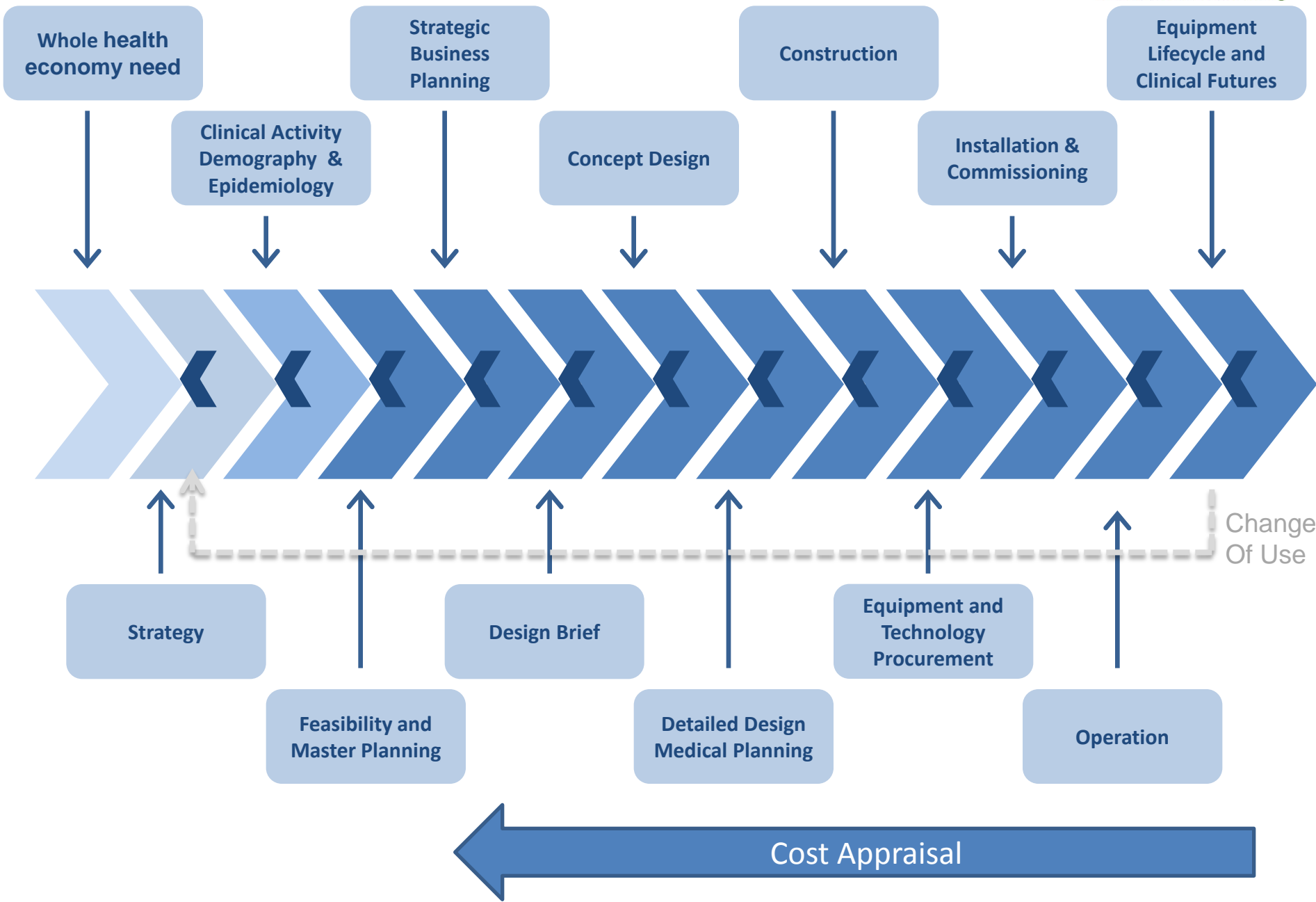
_ Change is inevitable – plan for it in the **brief**

_ Work out whole life **project economics**

_ **intelligent design**

creates future flexibility





Thank you