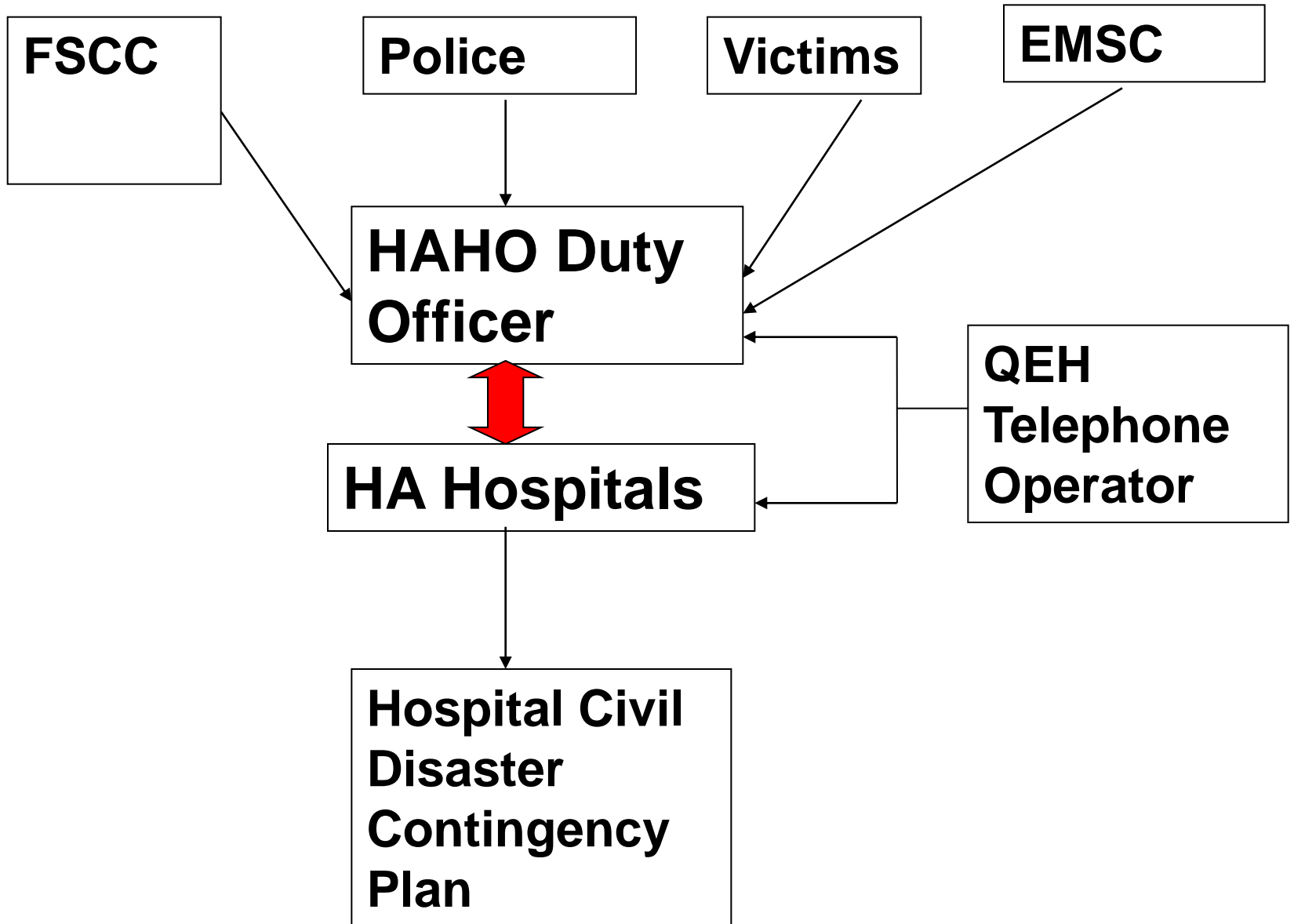


The “Hour” in Emergency Department

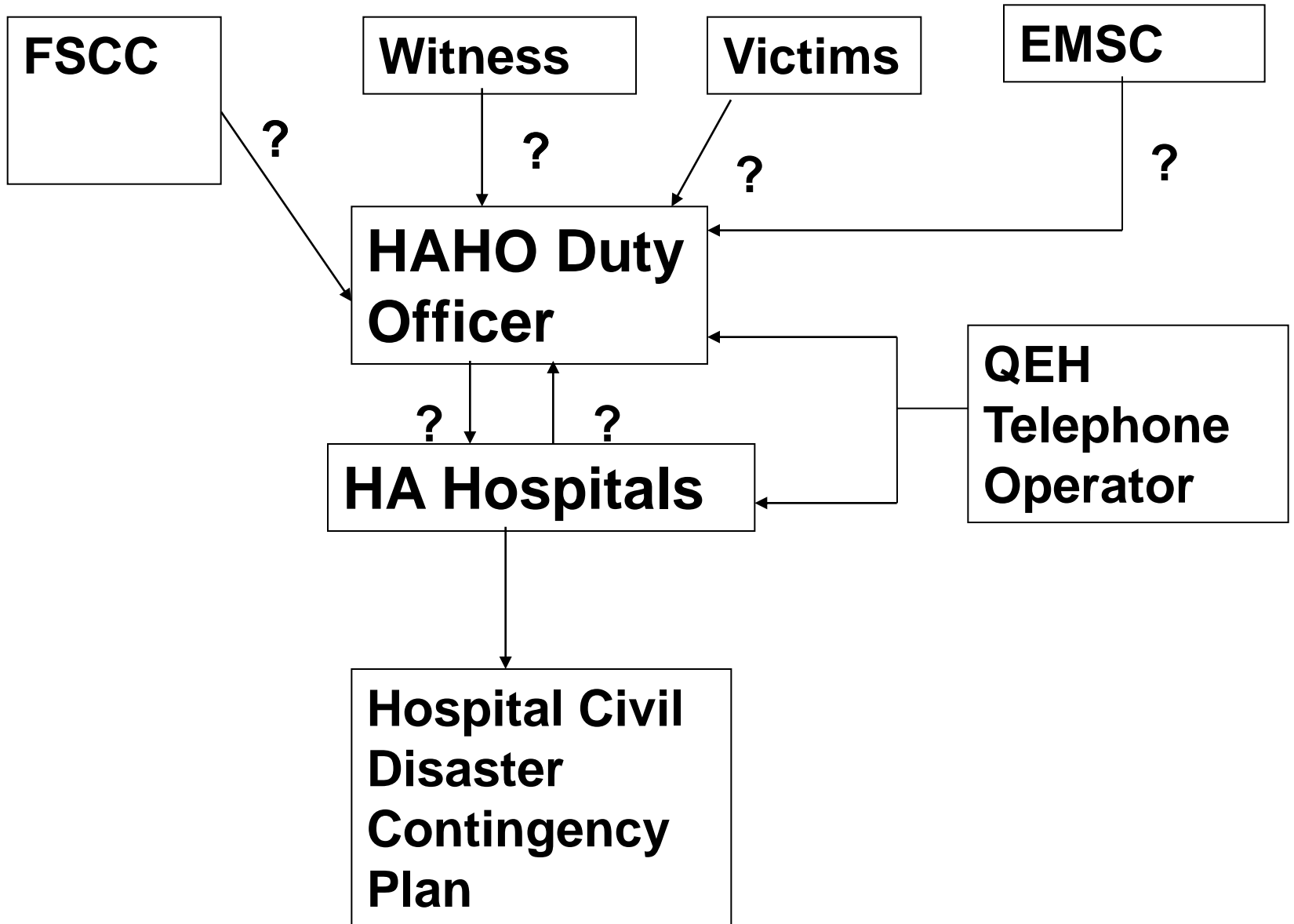
Dr Chan Lap Wa
Consultant
A&E, PYNEH



Difficult decision to be made by the HCE.....

Activate or not?

- ? based on the number of casualties
- ? based on severity of injuries of victims
- These information may be unreliable during the initial phase



知否世事常變 變幻原是永恒
此中波浪起跌 當然有幸有不幸

歌曲：家變

作曲：顧嘉輝

作詞：黃霑

主唱：羅文

Can we predict disaster and
activate our contingency
plan correctly?

$$\mathbf{a_1X_1 + a_2X_2 + a_3 X_3 + \dots + a_nX_n = P(activation)}$$

What are the predictors?

- **X_1 = Time of incident**
- **X_2 = Number of seriously injured (red cases)**
- **X_3 = Nature of injuries**
- ●
- ●
- ●
- ●
- **$X_n = ?$**

Ah Kung Ngam Road Bus Collision



Lamma Island Marine Incident



**Do victims always come to
A&E after activation of disaster
contingency plan?**

Lamma Island Marine Incident

- Let's go through the log-sheet of the Lamma Island Marine Incident in A&E, PYNEH on that day.
- A&E consultant activated the hospital disaster contingency plan immediately when he returned to A&E.
- Many events occurred while the consultants were driving back to hospital from different parts of Hong Kong at excessive speed.

Lamma Island Marine Incident

Time	Caller	Message	Response
-80 min	FSCC	Boat collision, 95 passengers	Message confirmation SMO notification
-72 min	North Lamma Clinic	? 3 victims arrived	? Need support Consultants notified
-55 min	QEH operator	Boat collision with drown victims	Prepare to receive victims,

Time	Caller	Message	Response
-40 min	QEH operator	95 passengers 17 landed in South Horizon	
-25 min	GFS will bring in 3 red cases	Trauma team activation	
-20 min	Arrival of red cases		3 concurrent resuscitation

-5 to 55 min: CPR on another child (brought by ambulance) with ECMO support in A&E

**Most of our work started
before full activation of
disaster contingency plan!**

新渡輪撞躉船35傷

- 【本報訊】一艘載有400名乘客的新渡輪客船，昨晚從中環開赴長洲途中，在喜靈洲避風塘對開與一艘躉船相撞，大批乘客如滾地葫蘆一仆一碌部份撞穿頭及撼甩牙35名乘客受傷，其中1人重傷昏迷，新渡輪直接駛返長洲登岸，傷者由救護車送院治理。





	Time	Site	Unknown Factor	Infrastructure
Lamma Island	✓	✓ Lamma Island FAP		✓ Lamma Island FAP
Ah Kung Ngam		Near PYNEH		
Hei Ling Chau	✓	✓ SJH	✓ Poor Weather	+/- SJH

PYNEH Revised Civil Disaster Contingency Plan

- **Level II (before full activation): 3-4 red cases**
- COS of key clinical department
 - AED, Surgical, ICU, O&T, NS
- Hospital managers
 - GM(N), GM(AS), Director (Q&S), PRO, hospital help desk
- **Senior staff alerted for manpower & resources deployment**
- No call back of non-duty staff

Have we become wiser?

- Customized protocol for each cluster
- Communicate with HAHO DO. Prompt update of service capacity of each hospital.
- Smartphone, Whatsapp
- Cable TV, Now TV, My TV (互動新聞台)

One picture is worth a thousand words





谢谢!

