



24小時溶栓中風治療

24 hours intravenous thrombolytic therapy for stroke

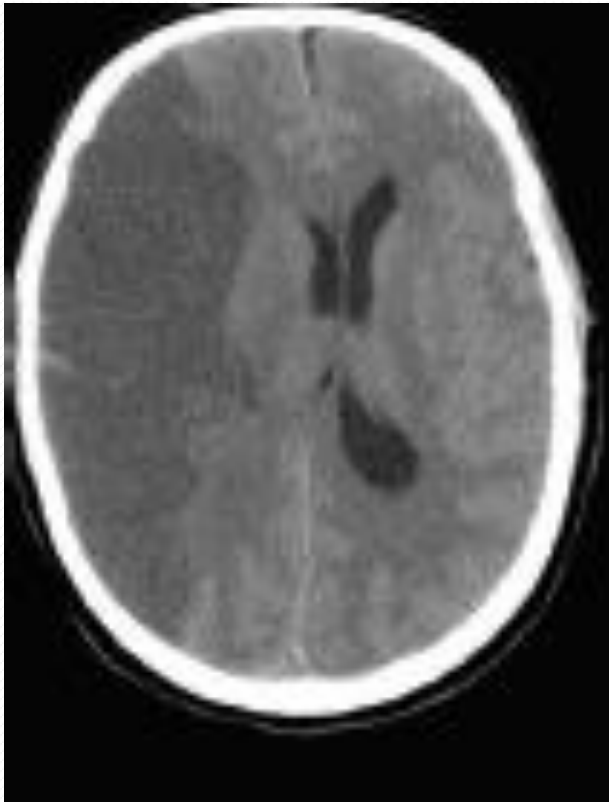
雅麗氏何妙齡那打素醫院及北區醫院

Alice Ho Miu Ling Nethersole Hospital & North District Hospital

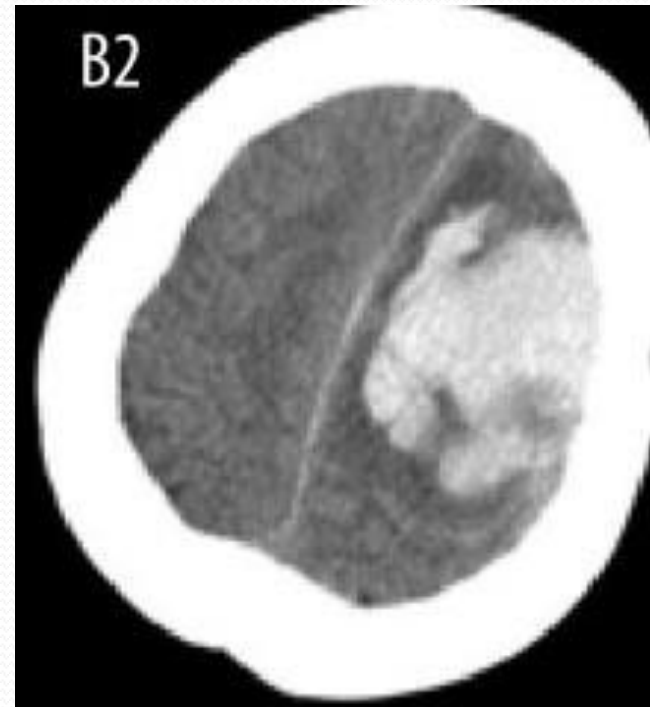


中風： 動脈血栓或出血引起的腦損傷

Stroke: brain damage due to arterial blockage or hemorrhage



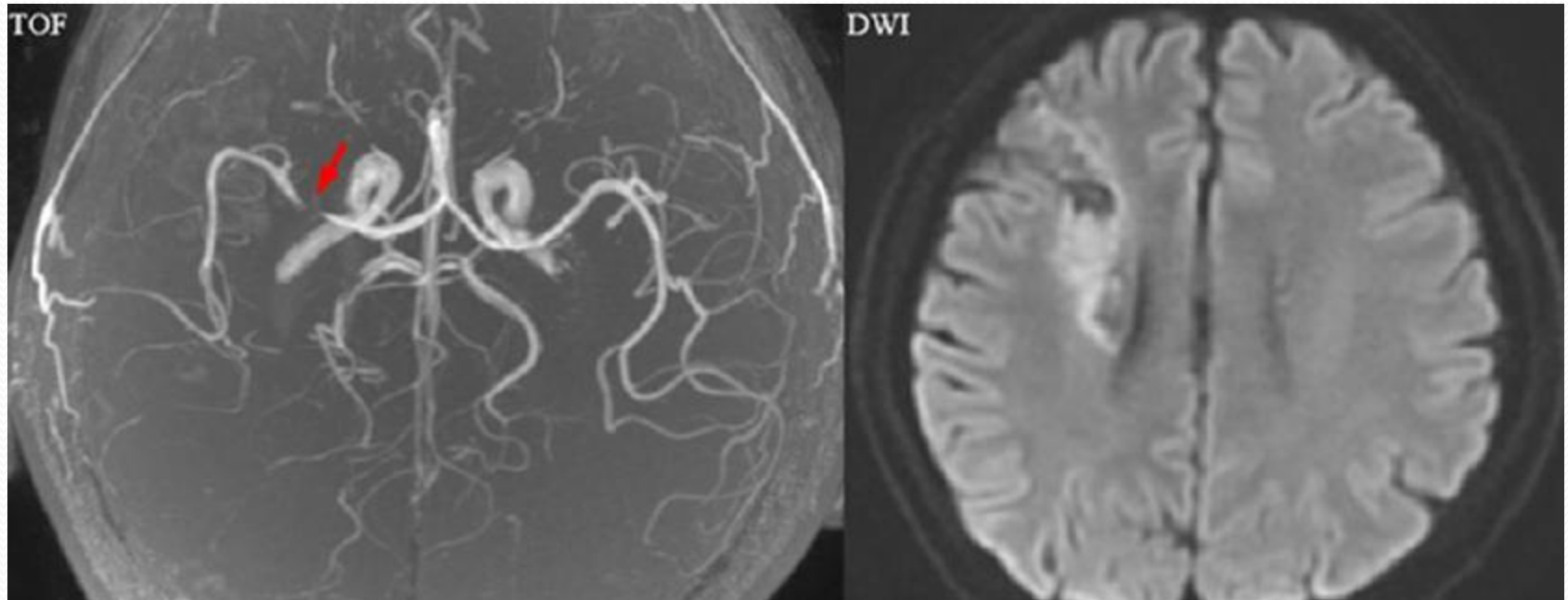
缺血性中風
Ischemic stroke



出血性中風
Hemorrhagic stroke

什麼是缺血性中風？

What is Ischemic Stroke?



腦動脈血栓導致腦梗塞

Brain arterial thrombosis leading to brain infarction

中風的影響

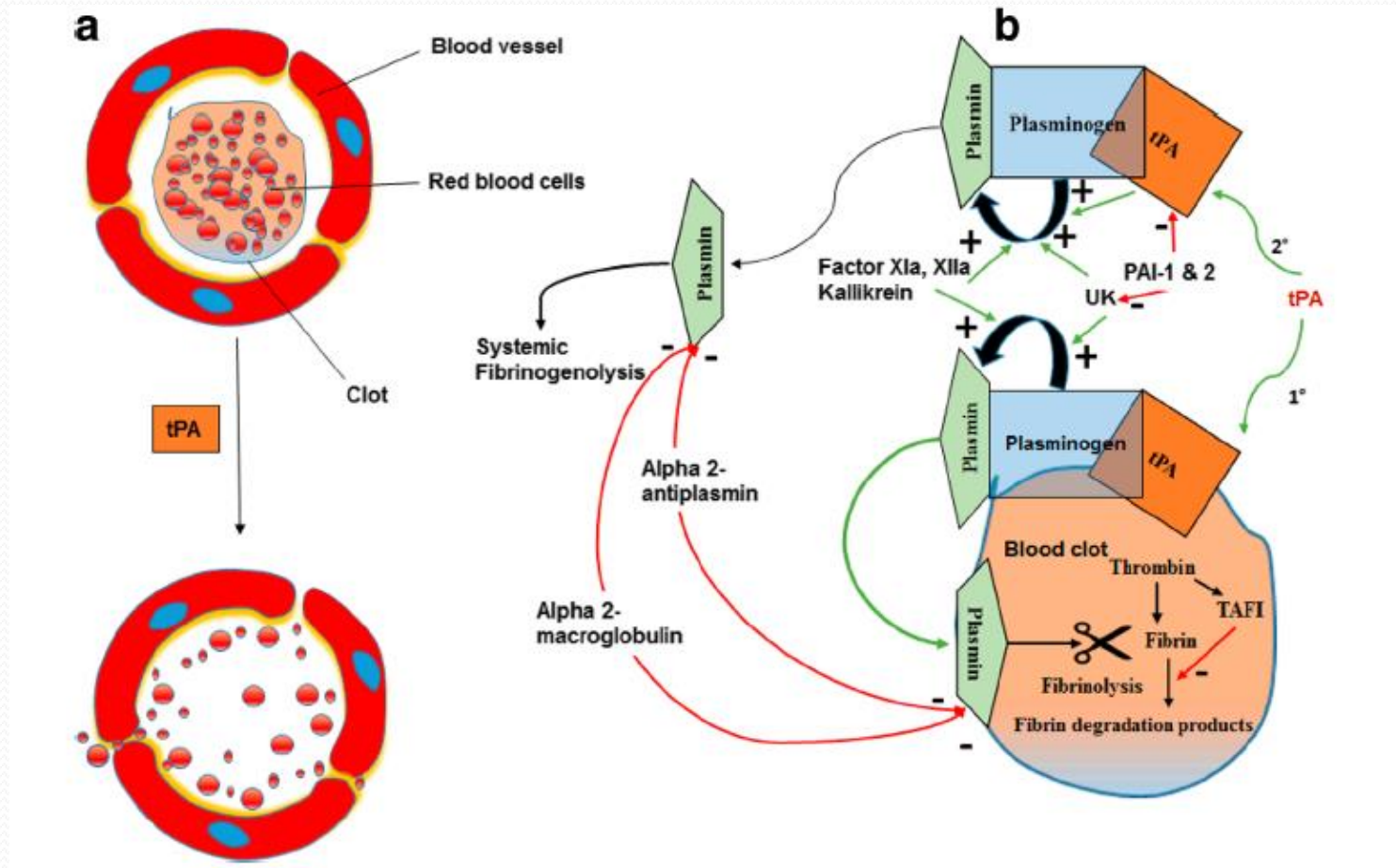
Impact of Stroke

- 肢體癱瘓 limbs paralysis
- 吞嚥困難 difficulty in swallowing
- 語言障礙 dysfunction in speech
- 意識障礙 impairment in consciousness
- 無法自理 unable to take care of oneself
- 併發症 complications
- 死亡 death



靜脈溶栓治療缺血性中風

Intravenous thrombolytic therapy for Ischemic Stroke



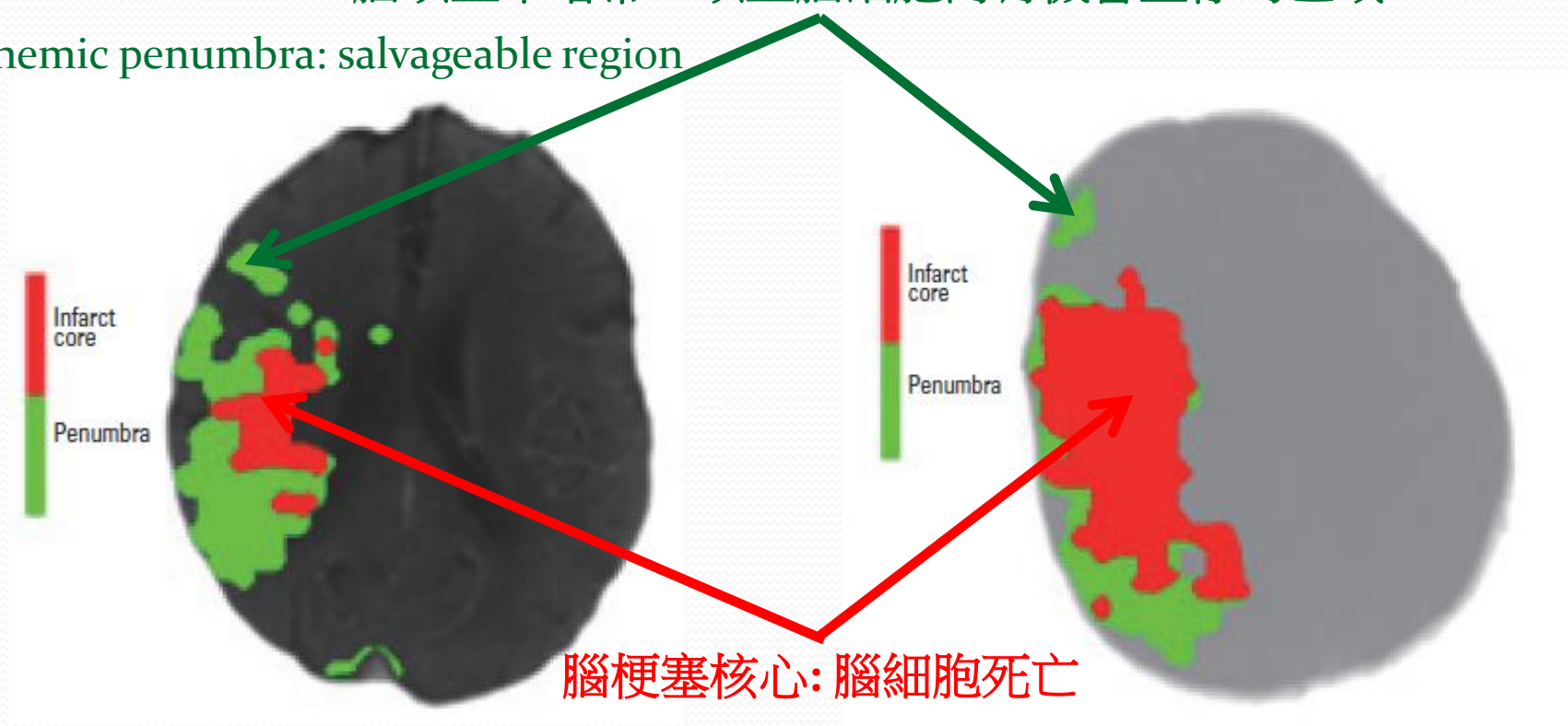
rtPA (Recombinant Tissue Plasminogen Activator) 重組組織型纖溶酶原激活劑

溶栓治療，分秒必爭

Every second counts in Thrombolytic Therapy

腦缺血半暗帶：缺血腦細胞尚有機會生存的區域

Ischemic penumbra: salvageable region



腦梗塞核心: 腦細胞死亡

Infarct core: brain cell death

雅麗氏何妙齡那打素醫院 和北區醫院

合作提供24小時靜脈溶栓治療

**24 hours Intravenous Thrombolytic Therapy for Stroke:
service collaboration by
Alice Ho Miu Ling Nethersole Hospital
and North District Hospital**



那打素及北區醫院提供 靜脈溶栓治療

Intravenous Thrombolytic Therapy: collaborative service by
Alice Ho Miu Ling Nethersole Hospital and North District Hospital



- 急症室醫生及護士 Emergency Medicine doctors and nurses at Accident and Emergency Department
- 駐院中風科護士 On-site Stroke Nurse
- 那打素及北區醫院組成腦神經科醫生隊伍
Neurologists of Alice Ho Miu Ling Nethersole Hospital and North District Hospital form one team: on duty to serve both hospitals

病人
Patient



急症室醫生及護士先作臨床評估：突發偏癱；病發時間

Doctor and nurse of Accident & Emergency Department provide initial assessment:
hemiparesis and onset time

中風科護士臨床評估：評估中風嚴重程度

Stroke nurse: assesses severity and extent of stroke

那打素/北區醫院當值腦神經科醫生
經遙距(Tele-stroke)
評估及決定治療方法

On-duty Neurologist of Nethersole and North District Hospitals
provides evaluation and management decision by Tele-stroke

快速察覺中風

Rapid recognition of Stroke



談



表達或說話有困難

笑



面部表情不對稱

用



一邊手腳無力

兵



盡快致電999求助

分流站 <A>

TRIAGE STATION <A>

救護員及急症室分流護士啟動溶栓篩查

Starting screening process for Stroke at Accident & Emergency Department



言語不清
表達困難
Speech
dysfunction



面部表情
不對稱
Facial
asymmetry



手軟弱無力
Hand
weakness



立即求診
Immediate
seek doctor

症狀 Symptoms

+

黃金三小時
Treatment window
3 hours

中風科護士收到急症室召喚

Urgent call message to Stroke Nurse from Accident and Emergency Department



立即從電子病歷瞭解病人 Check medical history from electronic patient record

最近病史、藥物紀錄 Medical and drug history

排除絕對不適合溶栓的因素 Check for contraindications



十分鐘內到達急症室
Rush to Accident and Emergency Department in less than 10 minutes

中風科護士到達急症室後

Stroke Nurse arrived at Accident and Emergency Department



詢問病人、家屬以確定病發時間 (< 3 小時)

Confirm onset time with patient and relatives (onset < 3 hours)



檢查病人、評估中風嚴重程度

Examine patient for severity and extent of stroke



協助安排快速檢查

Facilitate rapid investigations

初步排除出血性中風後 After ruling out hemorrhagic stroke:



匯報腦神經科醫生。若當時醫生並非駐院，
安排以遙距視像為病人診症。

Call Neurologist. Implement Tele-stroke.



依據醫生指示，替病人注射溶栓藥物。

As instructed by Neurologist, administer thrombolytic therapy.



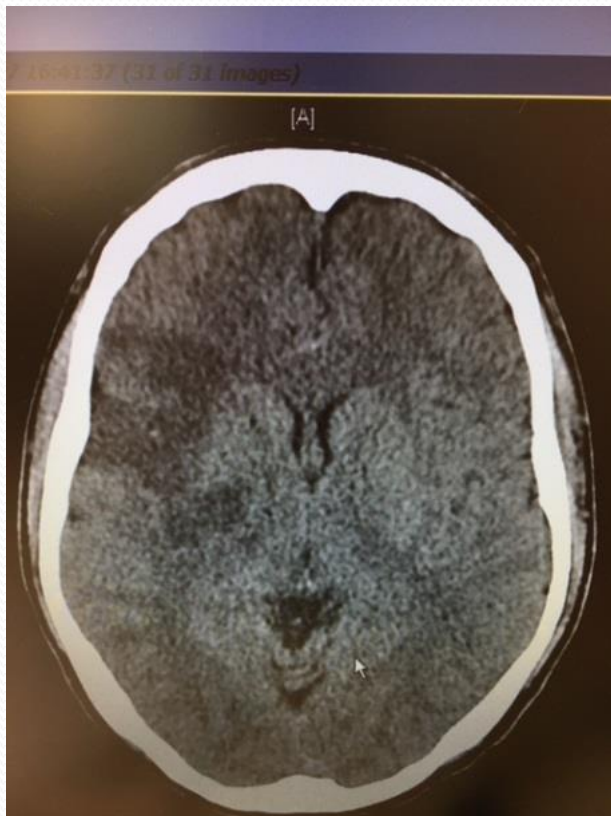
密切觀察病人情況及護送往急性中風部門/

深切治療部。Monitor and escort patient to Acute Stroke

Unit or Intensive Care Unit.

溶栓治療：醫護合作、病人受惠

Thrombolytic therapy: rapid team-work by doctors and nurses to deliver effective treatment for patients



病人分享 Patient's experience





雅麗氏何妙齡那打素醫院
Alice Ho Miu Ling Nethersole Hospital
caring since 1887



兩院合作：中風溶栓治療團隊

Thrombolytic therapy: two hospitals, one team



中風溶栓治療:主要參與部門

Participating Departments in Thrombolytic Therapy for Stroke:

- 內科 Medicine
- 急症科 Accident and Emergency Department
- 放射科 Radiology
- 病理科 Pathology
- 醫院管理局資訊科技部
Hospital Authority Information Technology



服務開展時序 Service start time

- 2018 年第四季: 十二小時服務(星期一至五，上午9 時至晚上9 時)
- Fourth Quarter of 2018: 12 hours service (Monday to Friday, 09:00 to 21:00)
- 2019 年第一季: 二十四小時服務
- First Quarter of 2019: 24 hours service

過渡措施 Interim arrangement

- 今年七月起，將辦公時間外到達急症室的病人轉介至威爾斯親王醫院。
 - 星期一至五晚上六時至早上九時、星期六、日及公眾假期
- Starting from July 2018, potential eligible patients attending at 18:00 to 09:00 Monday to Friday, whole day Saturday, Sunday and Public Holidays, may be transferred to Prince of Wales Hospital for further assessment.
- 病人被送往那打素或北區醫院時，病發少於1.5小時。
- Patients attending A&E Department of Alice Ho Miu Ling Nethersole Hospital or North District Hospital, the onset time of stroke being < 1.5 hour.
- 經威爾斯親王醫院中風團隊評估，符合轉院條件。
- Patient needs to fulfil clinical criteria as assessed by Prince of Wales Hospital before transferal.