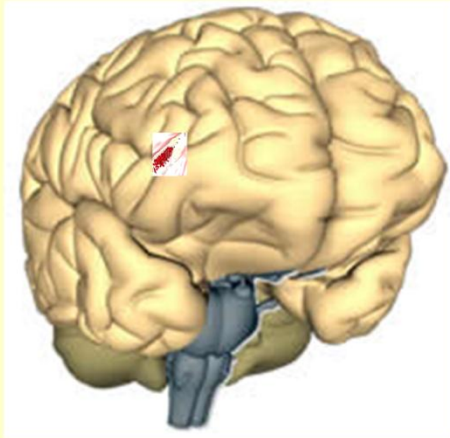


Expanding Nurse's Roles and Strengthen Clinical Collaboration to Accomplish

Cluster-Based 24 hours Thrombolysis Services

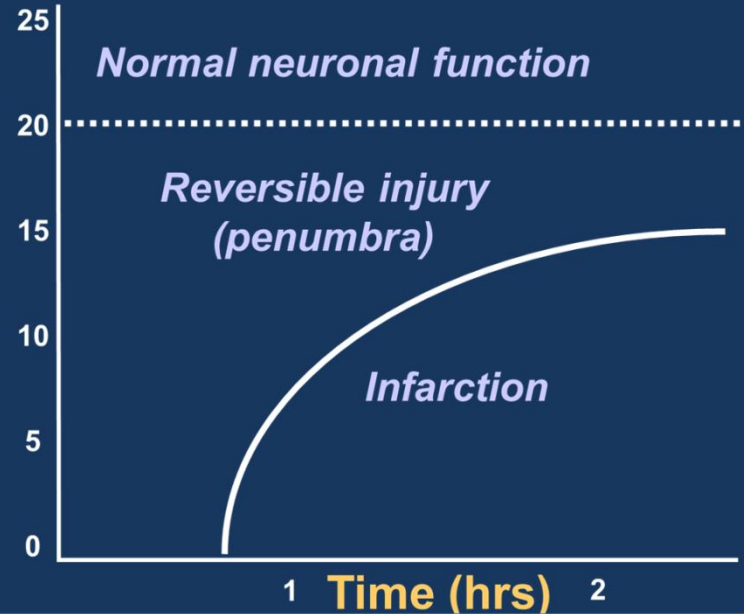
New Territories East Cluster (NTEC)

Shum WC Soo OYY Yeung HMJ Fan YMS Li SH Tang OL NTEC Stroke team



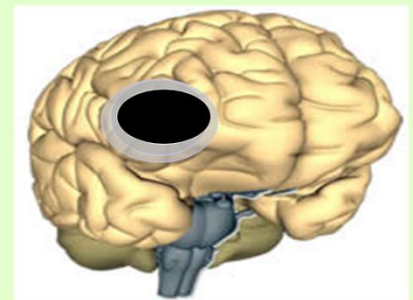
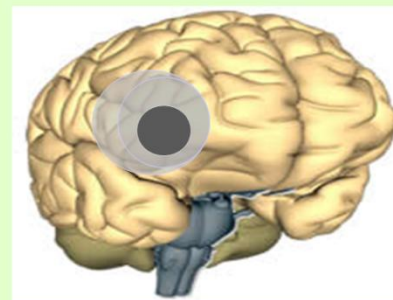
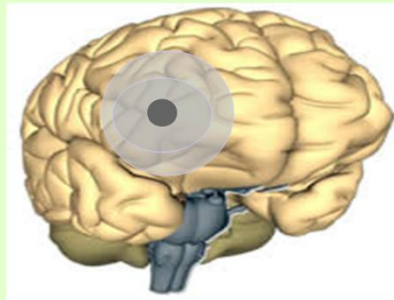
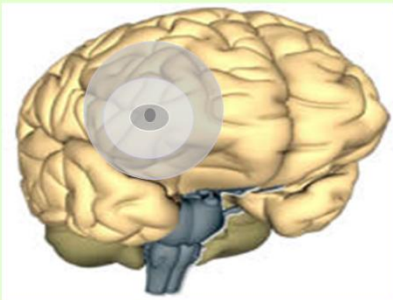
CBF

ml /
100g /
min



Time is Brain

The extent of viable **brain** tissue decreases with **time**



Exclude Stroke Mimics

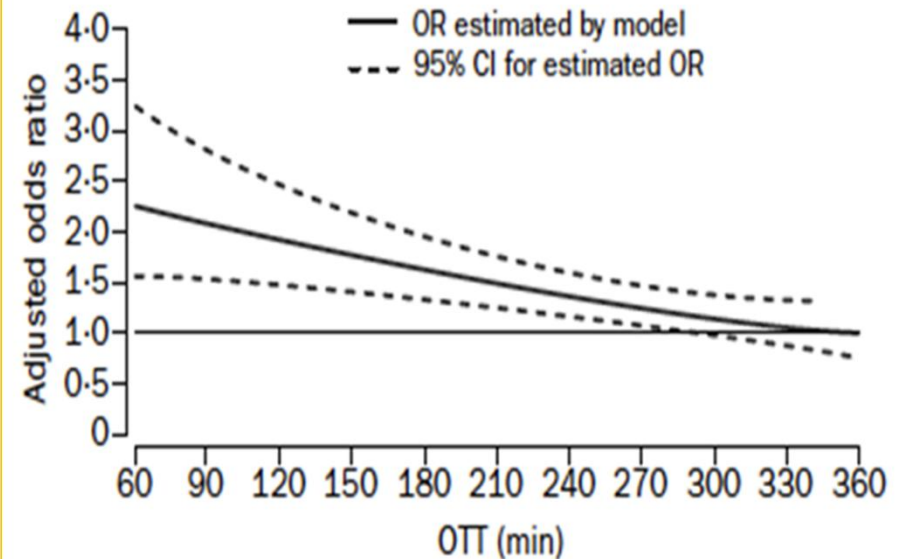
Migraine

Metabolic

Tumor

Epilepsy

Demyelination



Prudent screening for eligibility
Keep short onset to treatment time

談 笑 用 兵



3 Hospitals

PWH
AHNH
NDH



Objectives of the program :

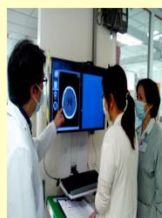
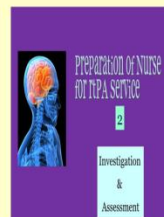
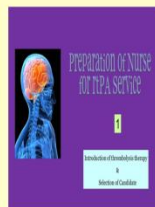
1. Quality training to experienced nurses in neurosciences
2. Strengthen clinical collaboration between nurses and neurologists
3. Building teams of tPA nurses in PWH, AHNH and NDH

Methodology :

- (1) Focused training to nurse in EDU and ASU
- (2) Devise guidelines and revise
- (3) Bedside coaching and seminars by nurse consultant
- (4) Neurologist conducts clinical skill assessment for nurses
- (5) Encompass tPA and screening at AED into nurse's tertiary training
- (6) Exercise the Tele-Stroke operation

In House Training on Thrombolysis in Acute ischemic Stroke

NDH	AHNH	TOPIC
03/4/12	27/3/12	Introduction of tPA & Nursing Roles (A)
11/4/12	11/4/12	Introduction of tPA & Nursing Roles (B)
02/5/12	18/4/12	Introduction of Stroke Scales, image & other investigation(A)
09/5/12	09/5/12	Introduction of Stroke Scales, image & other investigation(B)
15/5/12	16/5/12	Introduction of POCT INR (A)
23/5/12	23/5/12	Introduction of POCT INR (B)
11/7/12	06/06/12	Case Sharing (A)
25/7/12	13/6/12	Case Sharing (B)
08/8/12	27/6	TPA drill & demonstration (A)
22/8/12		TPA drill & demonstration (B)



Lectures and bedside coaching

Stroke Nurse Thrombolysis Triage

Clinical Skills Assessment

Acute Stroke Unit

Department of Medicine and Therapeutics

Prince of Wales Hospital

Name of Candidate: _____ Date of Evaluation: _____

Case 1	Score (Full marks = 20)			
	1 Need improvement	2 Acceptable	3 Good	4 Very Good
Ability to obtain relevant history from the patient and relatives efficiently				
Ability to differentiate stroke from other stroke mimics				
Calculation of rapid time				
Accuracy and efficiency in NEWS assessment				
Is the candidate able to report the relevant information to the neurologist?				
Is the candidate familiar with the triage protocol?				
Overall performance				
Total score (Passing mark 14)				
Reassessment is required? Total score < 14				

Clinical Skill Assessment by Neurologist

Assess for Eligibility of Thrombolysis

1. Check Basic Inclusion Criteria (NTEC)
Protocol for IV tPA
1 Age ≥ 18
2 Premorbid able to walk a few steps ± assistance
3 TPA can likely be given within 4.5 hours of symptom onset?
4 Clinical diagnosis of acute stroke with moderate to severe neurological deficit confirmed on physical examination or videoconference, e.g.: <ul style="list-style-type: none"> • Hemiparesis • Cortical signs (expressive dysphasia, hemi-neglect, homonymous hemianopia) • Limb ataxia • Tetraparesis with brainstem signs
5 CT brain show no acute haemorrhage
6 BP < 185/110mmHg
7 Hx/tix between 2.8-22

Screening for eligibility using electronic patient record

Major exclusion criteria	Yes	No
Any history of ICH, brain tumour or AVM	✓	
Learning point tPA screen failure 1. Because history of ICH 2. NIHSS > 20 ICH		

Result & Outcome:

1. 24 hours tPA service is implemented in PWH since August 2012.
2. AHNH and NDH follow the drip and keep principle; providing tPA treatment during office hours.
3. tPA was incorporated into all tertiary neurosciences training by Institute of Advanced Nursing Studies from 2009 onwards.
4. A total 13 nurses passed the credentialing in 2012
5. At present, there are 20 nurses undertaking the bedside coaching and related learning activities in NTEC.
6. Nurses partner with neurologists in provision of tPA service through telemedicine

Conclusions:

- ◆ tPA nurses are practicing advanced roles and their commitment is essential for implementation of 24-hour thrombolysis treatment.
- ◆ A strategic nurse-physician partnership and their mutual support are fundamental