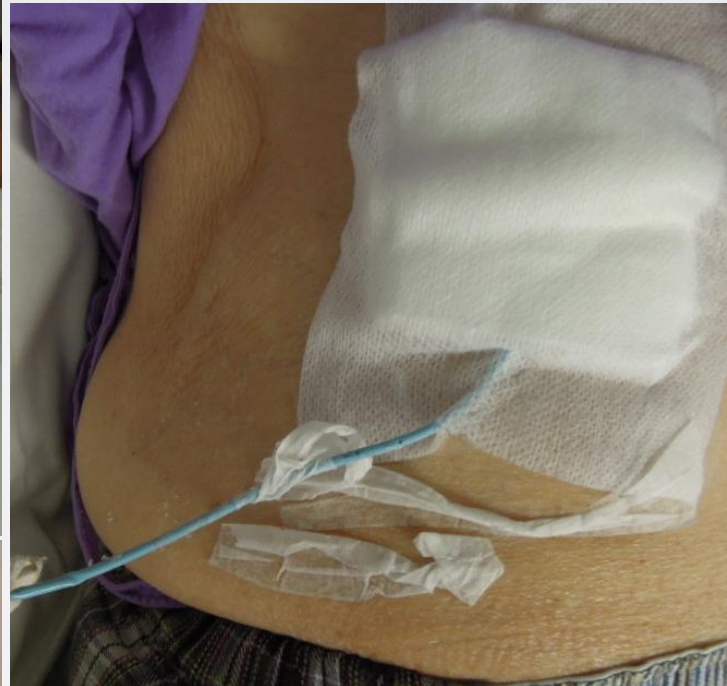
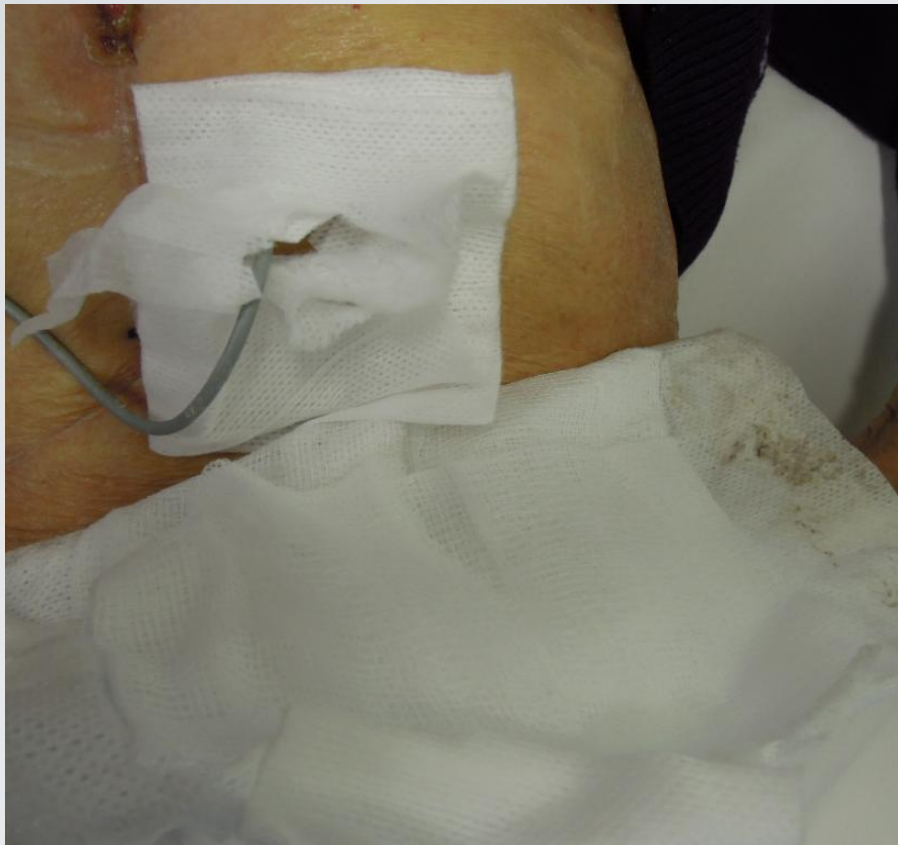




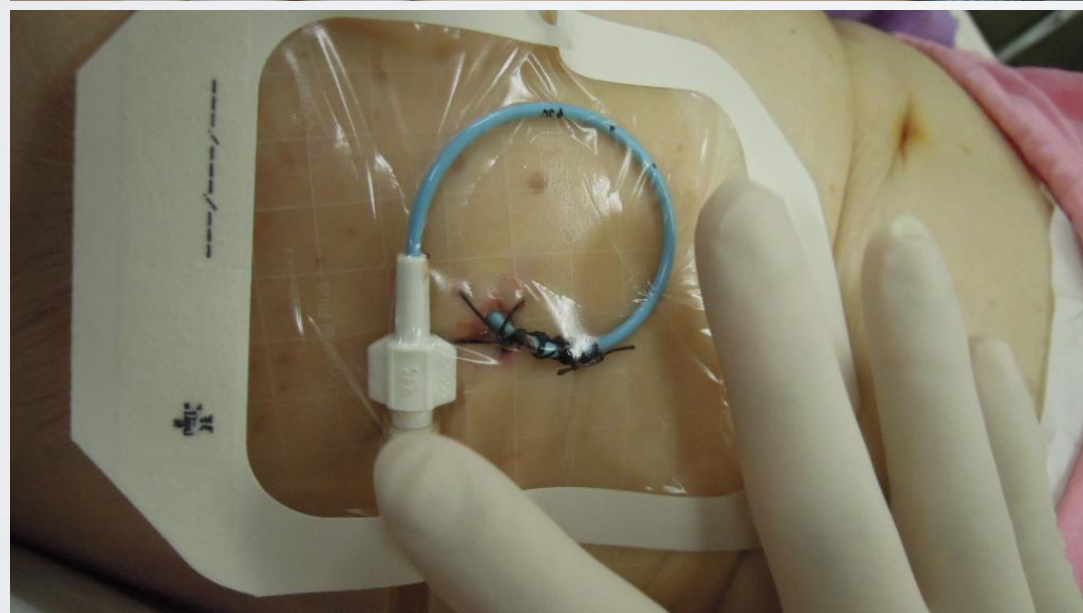
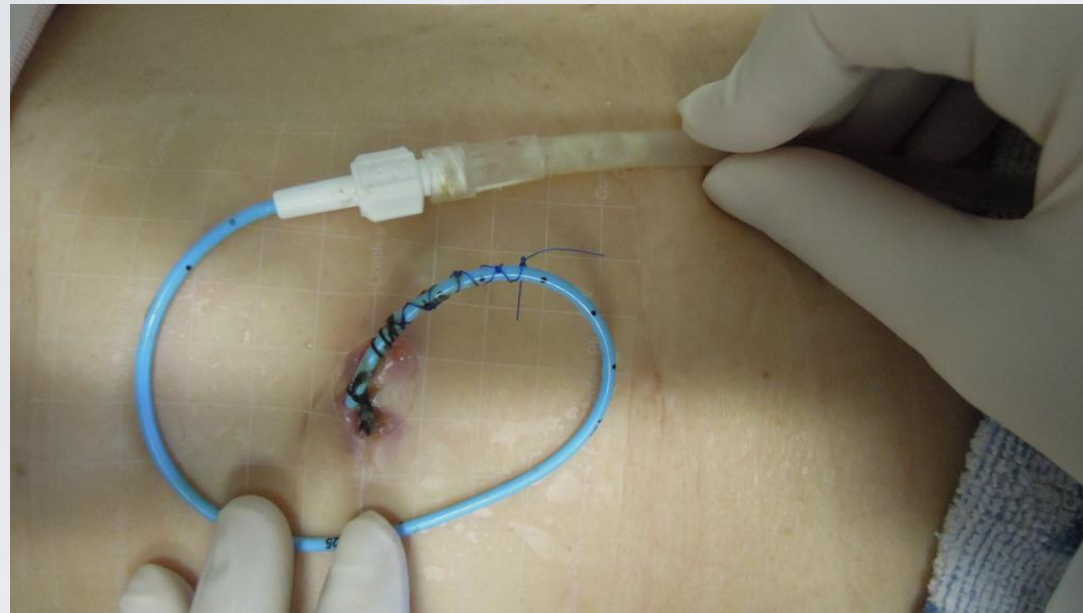
See-Through Dressing on Biliary Tubes
HKEC Wound Team
Surgery; PYNEH

Common GAPS



Poor Dressing & Fixation
Local Exit Site Infection
Tubing Twisting & Kinking
Peri-tubular Leak

SEE-Through DRESSING



RESULT 1

	10-11	11-12	12-13
Unplanned Admission within 28D	19%	23%	13%
Emergency Admission	26%	42%	20%
LOS	4.4D	4.2D	4.1D

RESULT 2

	Before the Program N=30	After the Program N=46	Performance Improved
Kinked Tubing	18	13	27%
Poor Bulky Dressing	22	4	64%
Dislodged Tubing	16	5	42%
Wound infection (Exit site)	12	8	23%
Difficulty Dressing Removal	23	7	60%