

From Do-not-Resuscitation Order to End-of-Life Care for the Elders in the Department of Geriatrics RHTSK (老人科晚程關顧服務)



End-of-Life Care Team
Ruttonjee & Tang Shiu Kin Hospitals

Strategies:

End of Life Care Workflow

Inhouse training

Poster for public promotion

Services referral form

Patient registry

Suitable environment / signage

Allow free visit

Psychosocial assessment

Comfort care plan

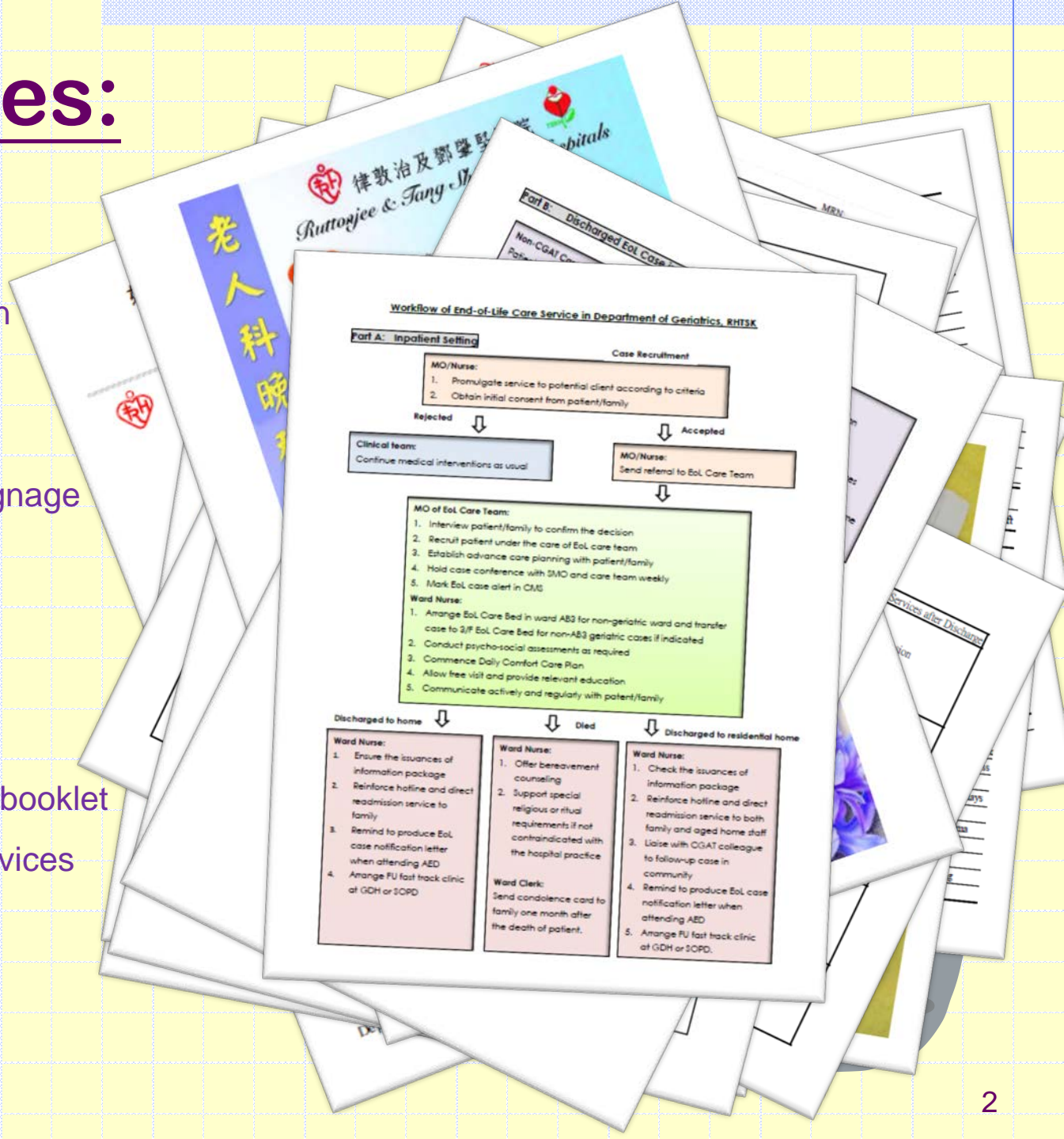
Active communication

Discharge planning / edu. booklet

Post-discharge hotline services

Direct readmission letter

Condolence card

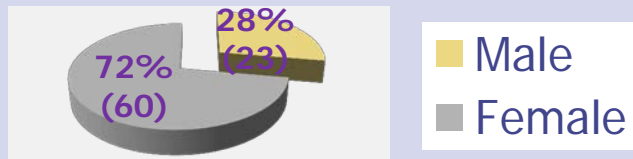


Results (1)

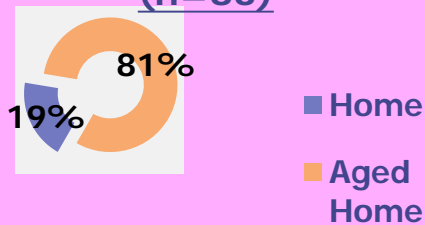
After 18 months trial from June 11 to Dec 2012

A total of 101 referral but only 83 cases recruited

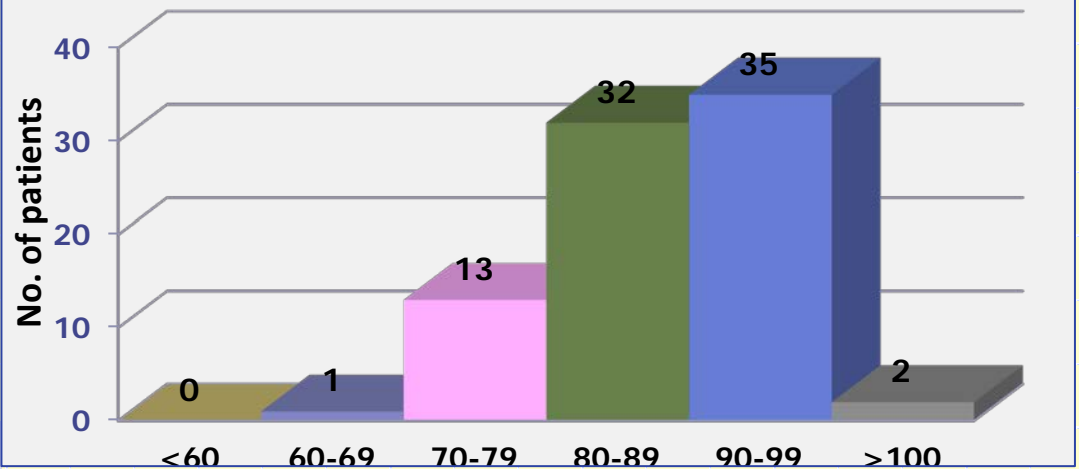
Gender (n=83)



Accommodation Status (n=83)

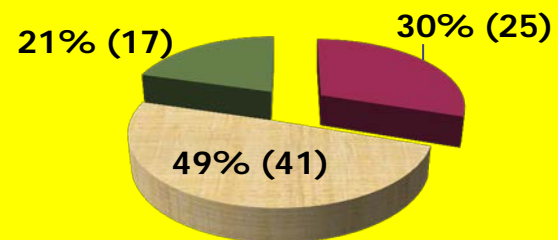


Age Distribution (n=83; mean=83.4)



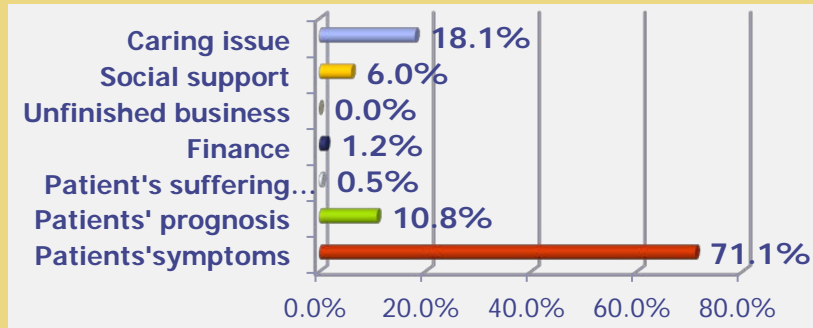
Patient Outcome (n=83)

- Alive
- Died on Index Adm.
- Died on Subsequent Adm



Results (2)

Family's Main Concerns (n=83, Multiple Option)

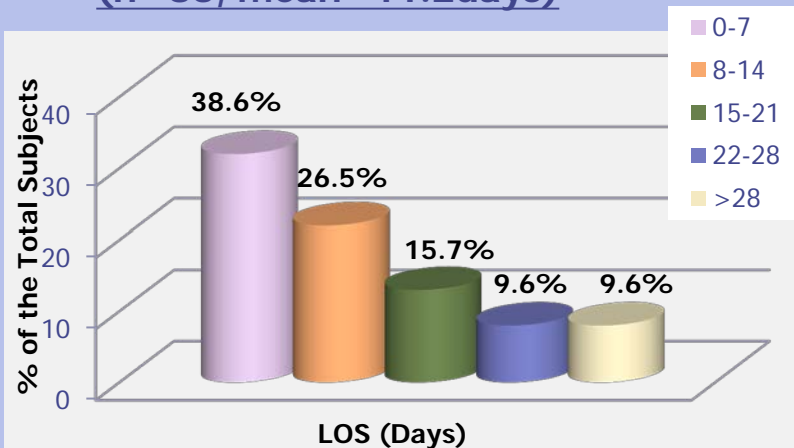


Expectation towards EOL Care Program

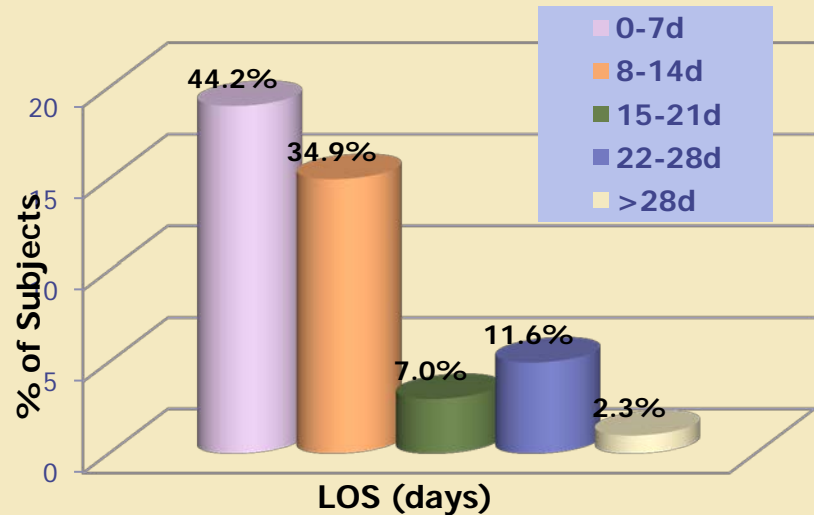
■ Patient
■ Family



Length of Stay on Index Admission (n=83, mean=11.2days)



Subsequent LOS under the Program (n=43; mean = 10.2days)



Take home message

Promulgate EOL care concept is your work