

## Thyroid Cancer in Hong Kong

Table 1. Incidence of Thyroid Cancer in 2009

	Male	Female
Number of cases registered	148	507
Rank	17	5
Proportion of all cancer	1.1%	4.1%
Male : Female ratio	1	3.4
Median age (years)	52	47
Crude rate*	4.5	13.7
Age-standardized rate (World)**	3.4	10.4
Lifetime risk before age 75	1 in 302	1 in 113
Mortality : Incidence ratio (2005-09)	0.12	0.04

\* All rates are expressed per 100,000

\*\* Rates are standardized to the age distribution of the WHO 2000 World Standard Population.

Table 2. Mortality of Thyroid Cancer in 2009

	Male	Female
Number of deaths registered	18	26
Rank	20	22
Proportion of all cancer	0.2%	0.5%
Male : Female ratio	1	1.4
Median age (years)	72	76.5
Crude rate*	0.5	0.7
Age-standardized rate (World)**	0.3	0.4
Lifetime risk before age 75	1 in 2,419	1 in 2,551

\* All rates are expressed per 100,000

\*\* Rates are standardized to the age distribution of the WHO 2000 World Standard Population.

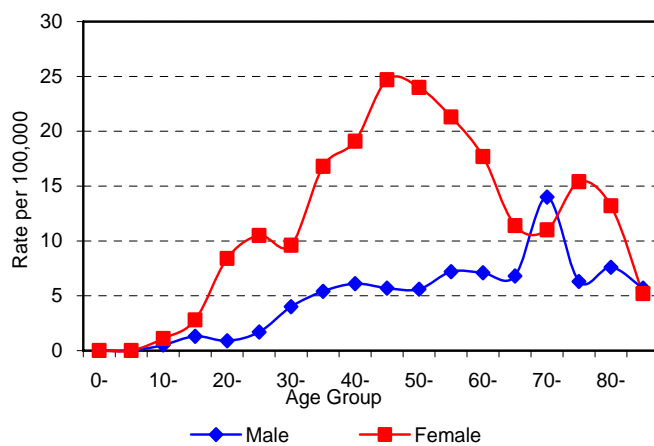


Fig 1. Age-specific Incidence Rate for Thyroid Cancer in 2009

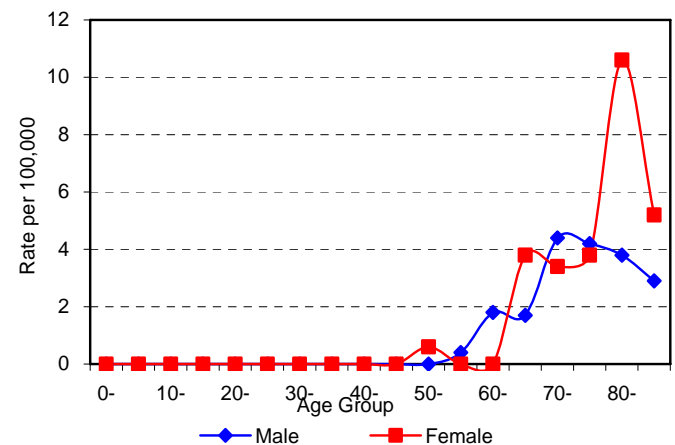
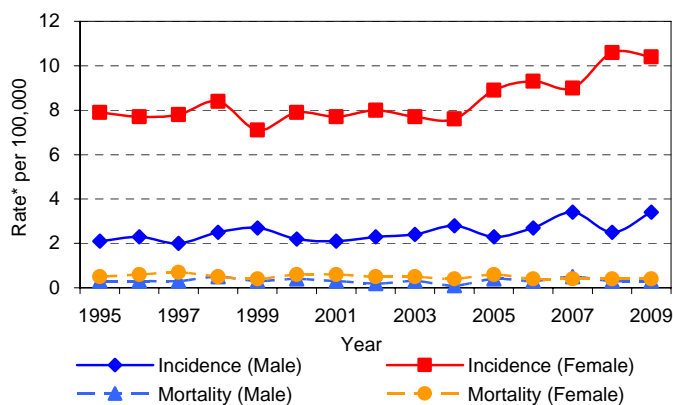


Fig 2. Age-specific Mortality Rate for Thyroid Cancer in 2009



\*Rates are standardized to the age distribution of the WHO 2000 World Standard Population.

Fig 3. Incidence and Mortality Trends for Thyroid Cancer by Sex, 1995-2009