

Nasopharyngeal Cancer in Hong Kong

Table 1. Incidence of Nasopharyngeal Cancer in 2009

	Male	Female
Number of cases registered	678	236
Rank	6	12
Proportion of all cancer	5.0%	1.9%
Male : Female ratio	2.9	1
Median age (years)	53	51
Crude rate*	20.6	6.4
Age-standardized rate (World)**	14.6	4.5
Lifetime risk before age 75	1 in 70	1 in 232
Mortality : Incidence ratio (2005-09)	0.39	0.33

* All rates are expressed per 100,000

** Rates are standardized to the age distribution of the WHO 2000 World Standard Population.

Table 2. Mortality of Nasopharyngeal Cancer in 2009

	Male	Female
Number of deaths registered	281	78
Rank	6	12
Proportion of all cancer	3.7%	1.5%
Male : Female ratio	3.6	1
Median age (years)	56	60.5
Crude rate*	8.5	2.1
Age-standardized rate (World)**	5.8	1.4
Lifetime risk before age 75	1 in 172	1 in 716

* All rates are expressed per 100,000

** Rates are standardized to the age distribution of the WHO 2000 World Standard Population.

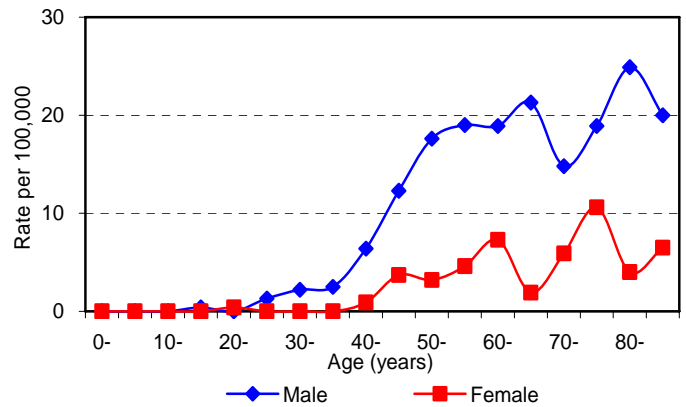
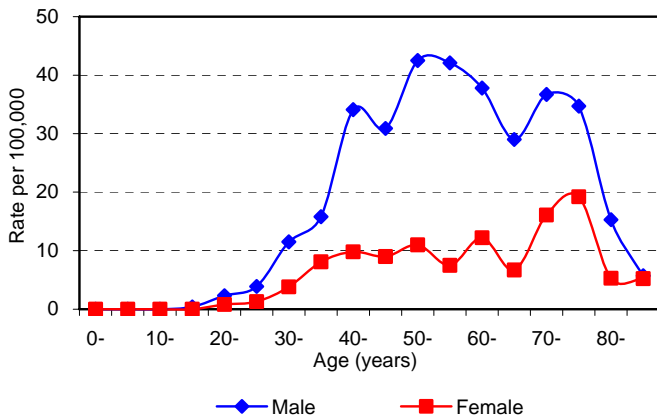
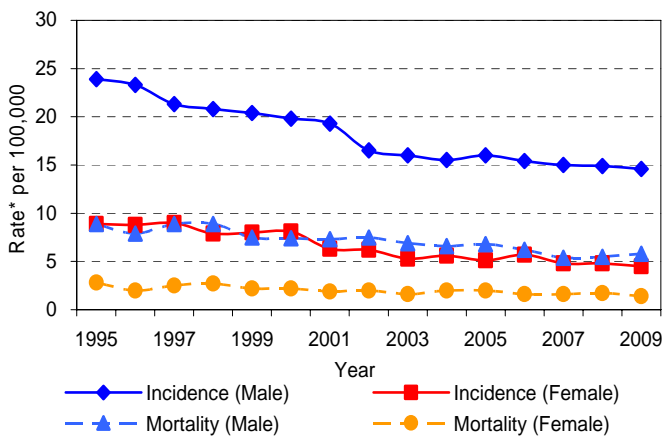


Fig 1. Age-specific Incidence Rate for Nasopharyngeal Cancer in 2009

Fig 2. Age-specific Mortality Rate for Nasopharyngeal Cancer in 2009



*Rates are standardized to the age distribution of the WHO 2000 World Standard Population.

Fig 3. Incidence and Mortality Trends for Nasopharyngeal Cancer by Sex, 1995-2009