

# Lung Cancer in Hong Kong

Table 1. Incidence of Lung Cancer in 2009

|                                      | Male    | Female  |
|--------------------------------------|---------|---------|
| Number of cases registered           | 2,848   | 1,517   |
| Rank                                 | 1       | 3       |
| Proportion of all cancer             | 20.8%   | 12.3%   |
| Male : Female ratio                  | 1.9     | 1       |
| Median age (years)                   | 71      | 72      |
| Crude rate*                          | 86.4    | 40.9    |
| Age-standardized rate (World)**      | 55.3    | 25.0    |
| Lifetime risk before age 75          | 1 in 18 | 1 in 41 |
| Mortality :Incidence ratio (2005-09) | 0.84    | 0.74    |

\* All rates are expressed per 100,000

\*\* Rates are standardized to the age distribution of the WHO 2000 World Standard Population.

Table 2. Mortality of Lung Cancer in 2009

|                                 | Male    | Female  |
|---------------------------------|---------|---------|
| Number of deaths registered     | 2,465   | 1,227   |
| Rank                            | 1       | 1       |
| Proportion of all cancer        | 32.1%   | 23.8%   |
| Male : Female ratio             | 2.0     | 1       |
| Median age (years)              | 73      | 77      |
| Crude rate*                     | 74.8    | 33.1    |
| Age-standardized rate (World)** | 47.3    | 18.8    |
| Lifetime risk before age 75     | 1 in 23 | 1 in 62 |

\* All rates are expressed per 100,000

\*\* Rates are standardized to the age distribution of the WHO 2000 World Standard Population.

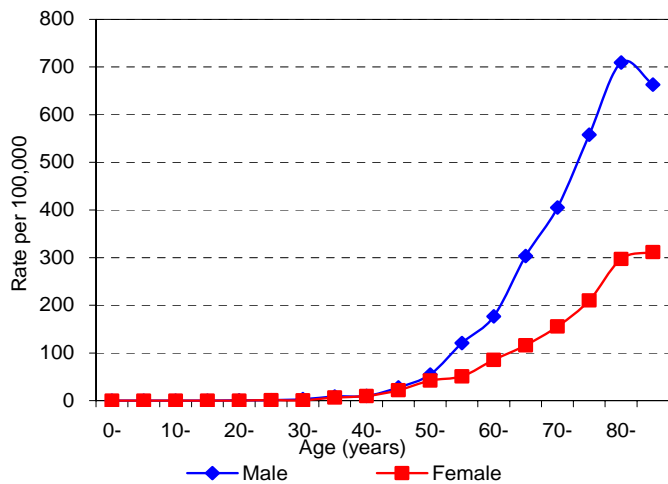


Fig 1. Age-specific Incidence Rate for Lung Cancer in 2009

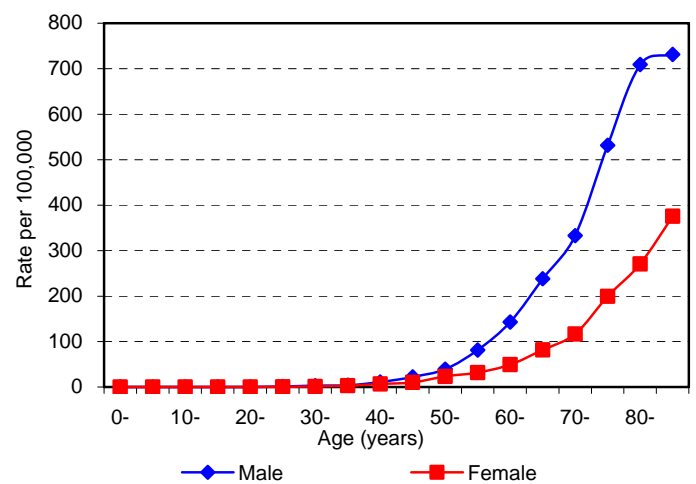
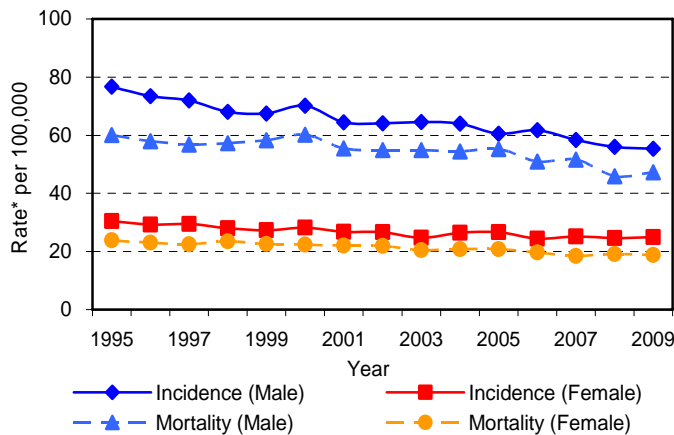


Fig 2. Age-specific Mortality Rate for Lung Cancer in 2009



\*Rates are standardized to the age distribution of the WHO 2000 World Standard Population.

Fig 3. Incidence and Mortality Trends for Lung Cancer by sex, 1995-2009