

Liver Cancer in Hong Kong

Table 1. Incidence of Liver Cancer in 2009

	Male	Female
Number of cases registered	1,385	447
Rank	4	8
Proportion of all cancer	10.1%	3.6%
Male : Female ratio	3.1	1
Median age (years)	62	72
Crude rate*	42.2	12.1
Age-standardized rate (World)**	27.9	7.7
Lifetime risk before age 75	1 in 33	1 in 129
Mortality : Incidence ratio (2005-09)	0.81	0.86

* All rates are expressed per 100,000

** Rates are standardized to the age distribution of the WHO 2000 World Standard Population.

Table 2. Mortality of Liver Cancer in 2009

	Male	Female
Number of deaths registered	1,072	416
Rank	2	4
Proportion of all cancer	14.0%	8.1%
Male : Female ratio	2.6	1
Median age (years)	67	75
Crude rate*	32.6	11.3
Age-standardized rate (World)**	21.2	6.7
Lifetime risk before age 75	1 in 45	1 in 147

* All rates are expressed per 100,000

** Rates are standardized to the age distribution of the WHO 2000 World Standard Population.

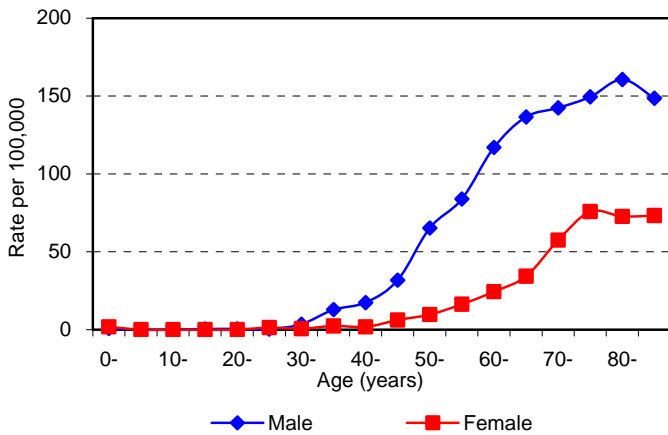


Fig 1. Age-specific Incidence Rate for Liver Cancer in 2009

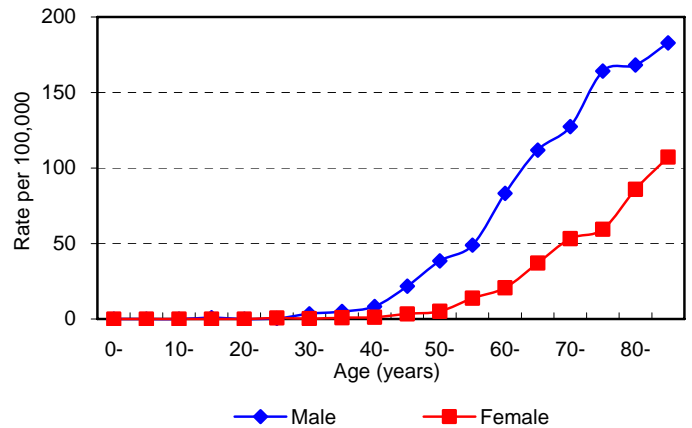
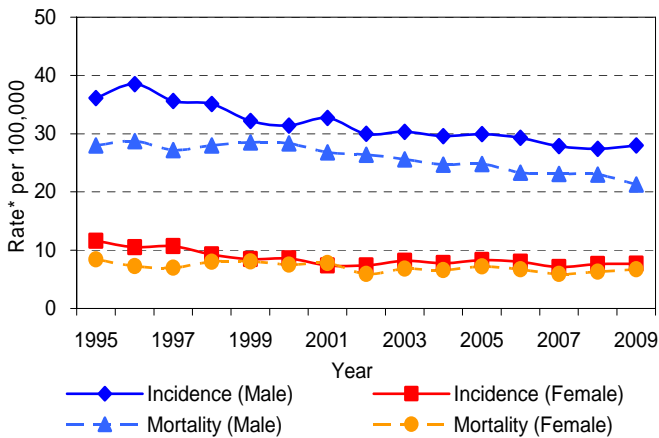


Fig 2. Age-specific Mortality Rate for Liver Cancer in 2009



*Rates are standardized to the age distribution of the WHO 2000 World Standard Population.

Fig 3. Incidence and Mortality Trends for Liver Cancer by Sex, 1995-2009