

Colorectal Cancer in Hong Kong

Table 1. Incidence of Colorectal Cancer in 2009

	Male	Female
Number of cases registered	2,405	1,930
Rank	2	2
Proportion of all cancer	17.6%	15.7%
Male : Female ratio	1.3	1
Median age (years)	70	72
Crude rate*	73.0	52.1
Age-standardized rate (World)**	47.4	32.1
Lifetime risk before age 75	1 in 21	1 in 32
Mortality : Incidence ratio (2005-09)	0.40	0.36

* All rates are expressed per 100,000

** Rates are standardized to the age distribution of the WHO 2000 World Standard Population.

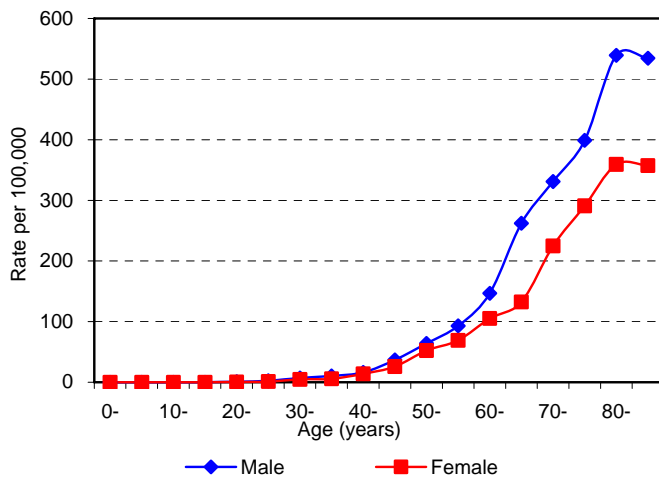


Fig 1. Age-specific Incidence Rate for Colorectal Cancer in 2009

Table 2. Mortality of Colorectal Cancer in 2009

	Male	Female
Number of deaths registered	999	753
Rank	3	2
Proportion of all cancer	13.0%	14.6%
Male : Female ratio	1.3	1
Median age (years)	73	76
Crude rate*	30.3	20.3
Age-standardized rate (World)**	19.1	11.5
Lifetime risk before age 75	1 in 58	1 in 102

* All rates are expressed per 100,000

** Rates are standardized to the age distribution of the WHO 2000 World Standard Population.

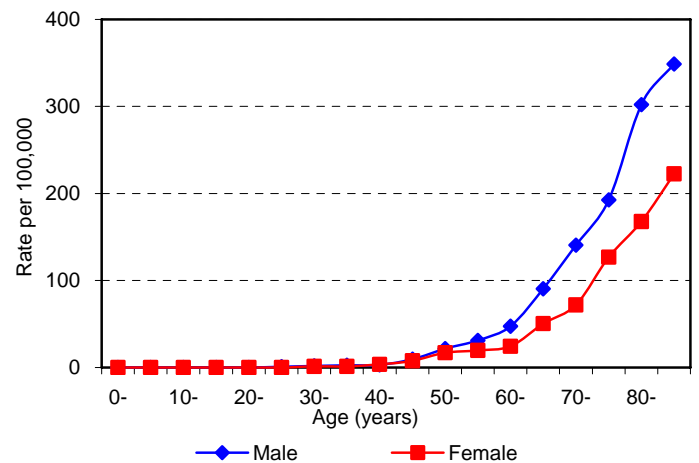
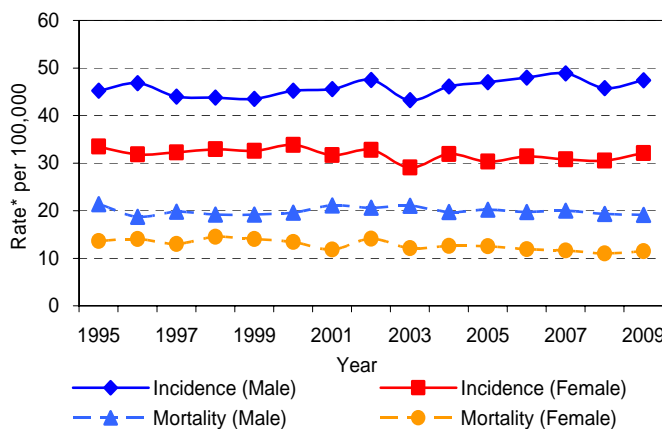


Fig 2. Age-specific Mortality Rate for Colorectal Cancer in 2009



*Rates are standardized to the age distribution of the WHO 2000 World Standard Population.

Fig 3. Incidence and Mortality Trends for Colorectal Cancer by Sex, 1995-2009

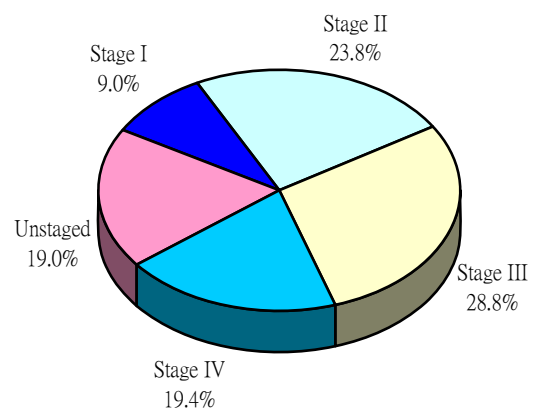


Fig 4. Stage Distribution of Colorectal Cancer in 2009