

Female Breast Cancer in Hong Kong

Table 1. Incidence and Mortality of Invasive Breast Cancer in 2009

	New Case	Death
Number of cases registered	2,945	555
Rank	1	3
Proportion of all cancer	24.0%	10.8%
Median age (years)	53	58
Crude rate*	79.4	15.0
Age-standardized rate (World)**	54.8	9.8
Lifetime risk before the age of 75	1 in 19	1 in 101
Mortality:Incidence ratio (2005-09)	0.18	

* All rates are expressed per 100,000 women.

** Rates are standardized to the age distribution of the WHO 2000 World Standard Population.

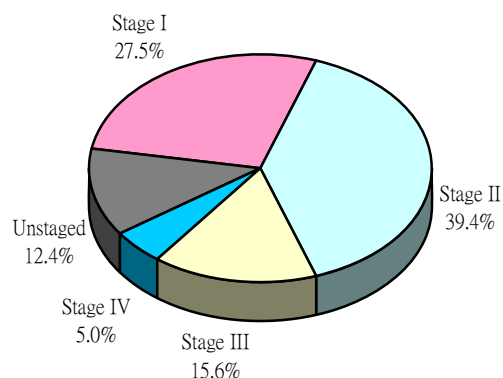


Fig 1. Stage Distribution of Invasive Breast Cancer in 2009

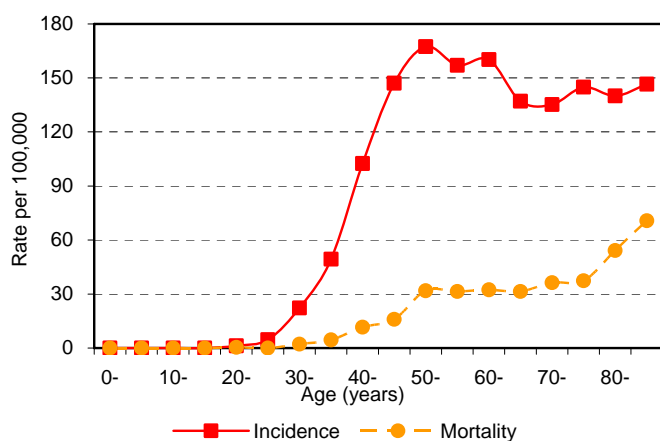
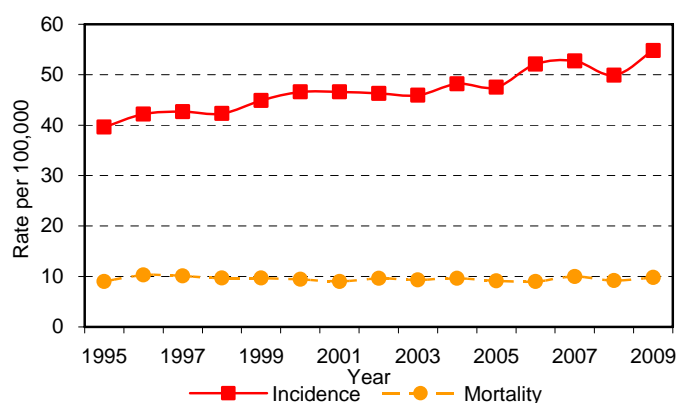


Fig 2. Age-specific Rates of Invasive Breast Cancer in 2009



* Rates are standardized to the age distribution of the WHO 2000 World Standard Population.

Fig 3. Incidence and Mortality Trends for Invasive Breast Cancer, 1995-2009

Carcinoma In-situ (Ca in-situ) of Breast Cancer

Data are presented for the first time about the incidence of in-situ breast cancer (Ca in-situ) in females. Ca in-situ is non-invasive and is the earliest form of breast cancer. The reporting of Ca in-situ incidence of breast cancer would be of interest in monitoring the number of pre-malignant abnormalities. Altogether there were a further 443 cases reported during 2009.

Table 2. Distribution for Breast Cancer in 2009 by Age Group and Type (Invasive and Ca in-situ)

Age (yrs)	0-	5-	10-	15-	20-	25-	30-	35-	40-	45-	50-	55-	60-	65-	70-	75-	80-	85+	All ages
Invasive	0	0	0	0	3	14	70	165	344	523	515	375	263	144	160	151	106	112	2,945
Ca in-situ	0	0	0	0	0	1	7	29	56	102	69	54	38	25	21	17	14	10	443
Total	0	0	0	0	3	15	77	194	400	625	584	429	301	169	181	168	120	122	3,388

Table 3. Age-specific Incidence rates of Breast Cancer (per 100,000 women) in 2009 by Type (Invasive and Ca in-situ)

Age (yrs)	0-	5-	10-	15-	20-	25-	30-	35-	40-	45-	50-	55-	60-	65-	70-	75-	80-	85+	Lifetime risk ¹	Crude rate	ASR (World) ²
Invasive	0.0	0.0	0.0	0.0	1.3	4.6	22.3	49.4	102.5	147.1	167.4	157.0	160.2	137.1	135.2	144.9	140.0	146.6	1 in 19	79.4	54.8
Ca in-situ	0.0	0.0	0.0	0.0	0.0	0.3	2.2	8.7	16.7	28.7	22.4	22.6	23.1	23.8	17.8	16.3	18.5	13.1	1 in 121	11.9	8.3
Total	0.0	0.0	0.0	0.0	1.3	4.9	24.5	58.1	119.2	175.8	189.8	179.6	183.3	161.0	153.0	161.2	158.5	159.7	1 in 17	91.4	63.2

1. Lifetime risk before the age of 75.

2. Age-standardized rates (ASR) are standardized to the age distribution of the WHO 2000 World Standard Population.